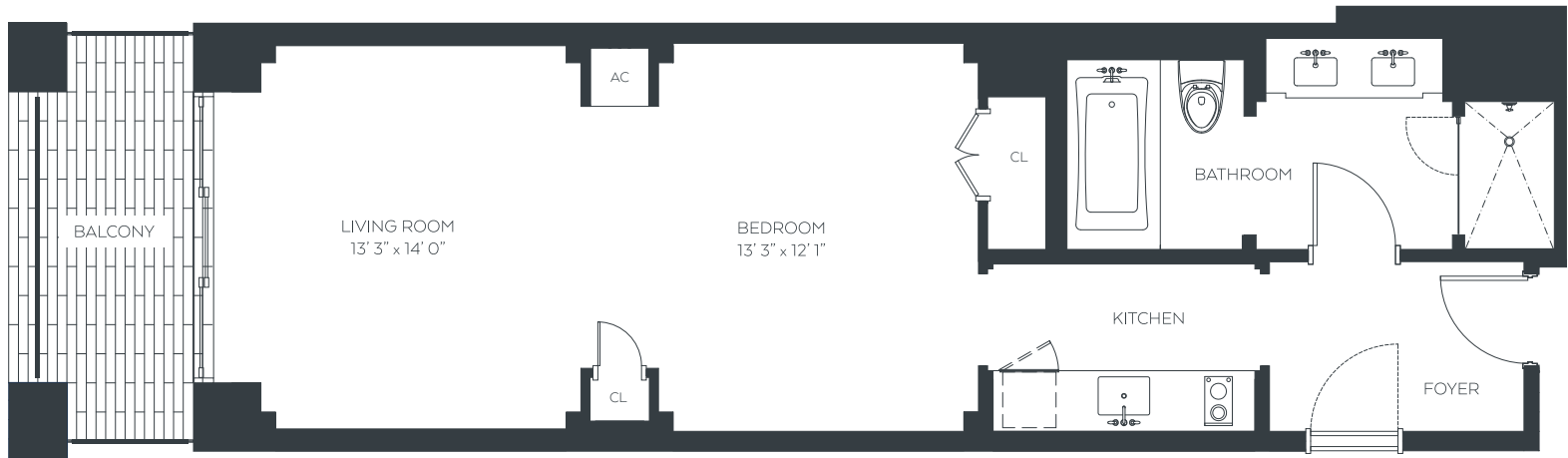


THE ELLIOTT

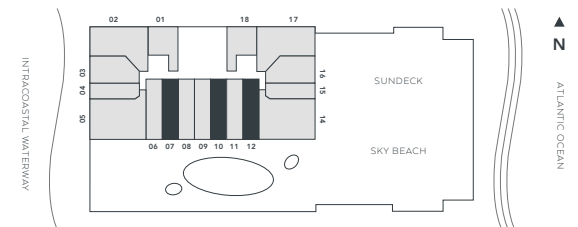
FORT LAUDERDALE BEACH



Floorplan A1 Studio \ 1 Bath \ Floors 6-23

South pool facing with soaking tub and balcony. Units are fully furnished and feature modern gourmet kitchen with premium high-gloss, and darkwood veneer cabinetry complimented by white quartz countertops.

Residence	648 sqft	60.20 M ²
Balcony	67 sqft	6.22 M ²
Total	715 sqft	66.42 M²



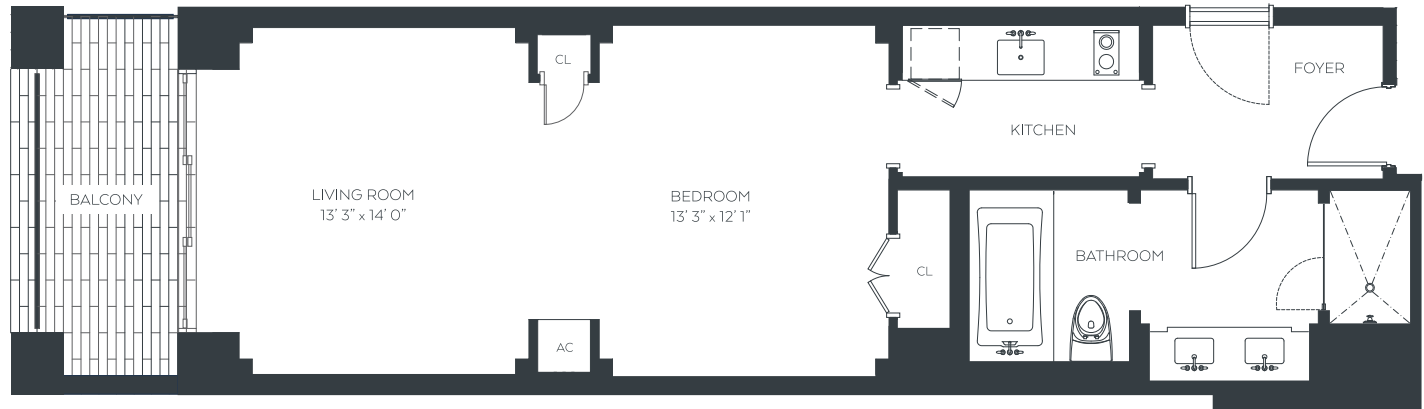
elliottfortlauderdale.com

Compass is a licensed real estate broker. Compass is licensed to do business in Florida as Compass Florida, LLC, as: Compass in California, Colorado, Connecticut, Florida, Georgia, Hawaii, Illinois, Maryland, Massachusetts, Minnesota, New Jersey, New York, North Carolina, Rhode Island, Texas, Virginia, and Washington; Compass RE in Delaware, Idaho, Pennsylvania and Tennessee; Compass Real Estate in Washington, DC, Maine, New Hampshire, Vermont, and Wyoming; Compass Realty Group in Missouri and Kansas; Launch Powered by Compass in Arizona; and Compass Carolinas, LLC in South Carolina. California License # 01991628, 1527235, 1527365, 1356742, 1443761, 1997075, 1935359, 1961027, 1842987, 1869607, 1866771, 1527205, 1079009, 1272467. No guarantee, warranty or representation of any kind is made regarding the completeness or accuracy of descriptions or measurements (including square footage measurements and property condition), such should be independently verified, and Compass expressly disclaims any liability in connection therewith. No financial or legal advice provided. Equal Housing Opportunity. © Compass 2025. 212-913-9058

COMPASS | Probst.

THE ELLIOTT

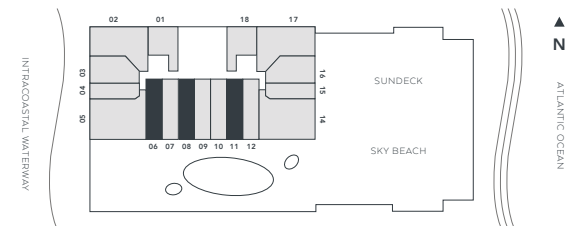
FORT LAUDERDALE BEACH



Floorplan A1.1 Studio \ 1 Bath \ Floors 6-23

South pool facing with soaking tub and balcony. Units are fully furnished and feature modern gourmet kitchen with premium high-gloss, and darkwood veneer cabinetry complimented by white quartz countertops.

Residence	648 sqft	60.20 M ²
Balcony	67 sqft	6.22 M ²
Total	715 sqft	66.42 M²



elliottfortlauderdale.com

Compass is a licensed real estate broker. Compass is licensed to do business in Florida as Compass Florida, LLC, as: Compass in California, Colorado, Connecticut, Florida, Georgia, Hawaii, Illinois, Maryland, Massachusetts, Minnesota, New Jersey, New York, North Carolina, Rhode Island, Texas, Virginia, and Washington; Compass RE in Delaware, Idaho, Pennsylvania and Tennessee; Compass Real Estate in Washington, DC, Maine, New Hampshire, Vermont, and Wyoming; Compass Realty Group in Missouri and Kansas; Launch Powered by Compass in Arizona; and Compass Carolinas, LLC in South Carolina. California License # 01991628, 1527235, 1527365, 1356742, 1443761, 1997075, 1935359, 1961027, 1842987, 1869607, 1866771, 1527205, 1079009, 1272467. No guarantee, warranty or representation of any kind is made regarding the completeness or accuracy of descriptions or measurements (including square footage measurements and property condition), such should be independently verified, and Compass expressly disclaims any liability in connection therewith. No financial or legal advice provided. Equal Housing Opportunity. © Compass 2025. 212-913-9058

COMPASS | Probst.

THE ELLIOTT

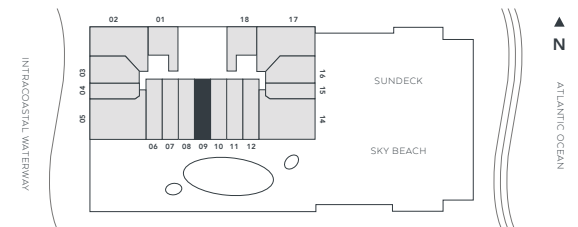
FORT LAUDERDALE BEACH



Floorplan A2 Studio \ 1 Bath \ Floors 6-23

South pool facing with soaking tub and balcony. Unit comes fully furnished and feature modern gourmet kitchen with premium high-gloss, and darkwood veneer cabinetry complimented by white quartz countertops.

Residence	655 sqft	60.85 M ²
Balcony	69 sqft	6.41 M ²
Total	724 sqft	67.26 M²



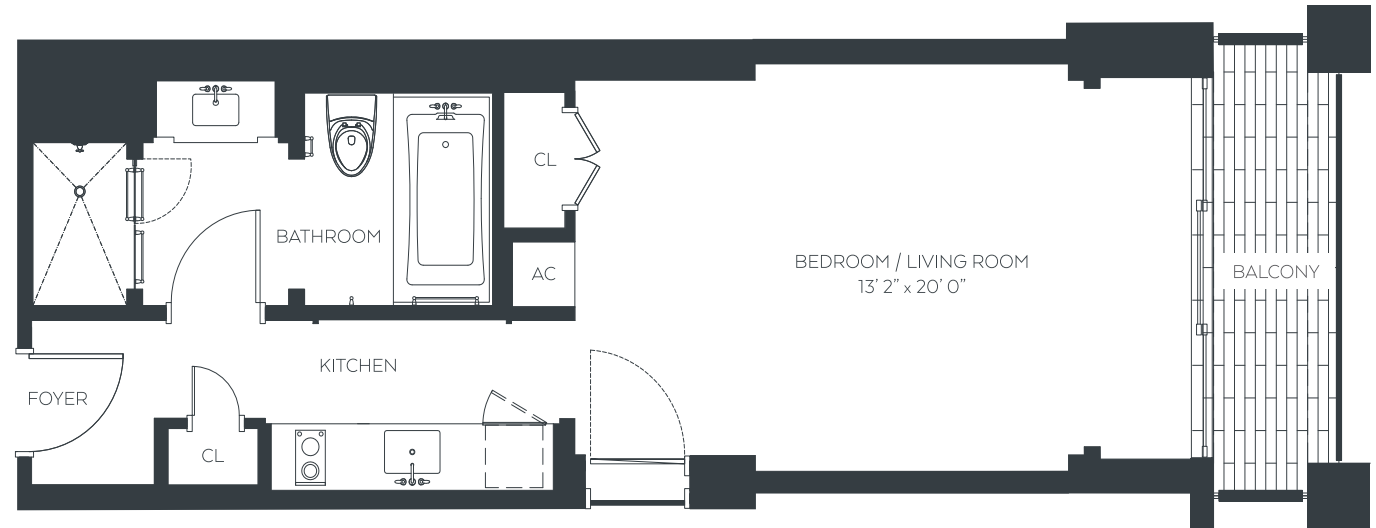
elliottfortlauderdale.com

Compass is a licensed real estate broker. Compass is licensed to do business in Florida as Compass Florida, LLC, as: Compass in California, Colorado, Connecticut, Florida, Georgia, Hawaii, Illinois, Maryland, Massachusetts, Minnesota, New Jersey, New York, North Carolina, Rhode Island, Texas, Virginia, and Washington; Compass RE in Delaware, Idaho, Pennsylvania and Tennessee; Compass Real Estate in Washington, DC, Maine, New Hampshire, Vermont, and Wyoming; Compass Realty Group in Missouri and Kansas; Launch Powered by Compass in Arizona; and Compass Carolinas, LLC in South Carolina. California License # 01991628, 1527235, 1527365, 1356742, 1443761, 1997075, 1935359, 1961027, 1842987, 1869607, 1866771, 1527205, 1079009, 1272467. No guarantee, warranty or representation of any kind is made regarding the completeness or accuracy of descriptions or measurements (including square footage measurements and property condition), such should be independently verified, and Compass expressly disclaims any liability in connection therewith. No financial or legal advice provided. Equal Housing Opportunity. © Compass 2025. 212-913-9058

COMPASS | Probst.

THE ELLIOTT

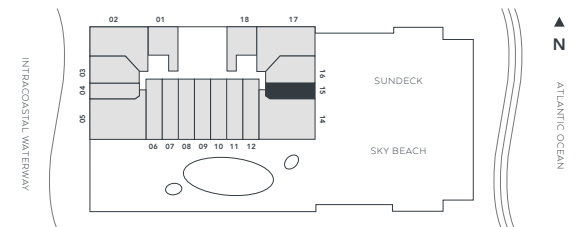
FORT LAUDERDALE BEACH



Floorplan B1 Studio \ 1 Bath \ Floors 7-18

East facing with soaking tub and balcony. Unit comes fully furnished and feature modern gourmet kitchen with premium high-gloss, and darkwood veneer cabinetry complimented by white quartz countertops.

Residence	493 sqft	45.80 M ²
Balcony	52 sqft	4.83 M ²
Total	545 sqft	50.63 M²



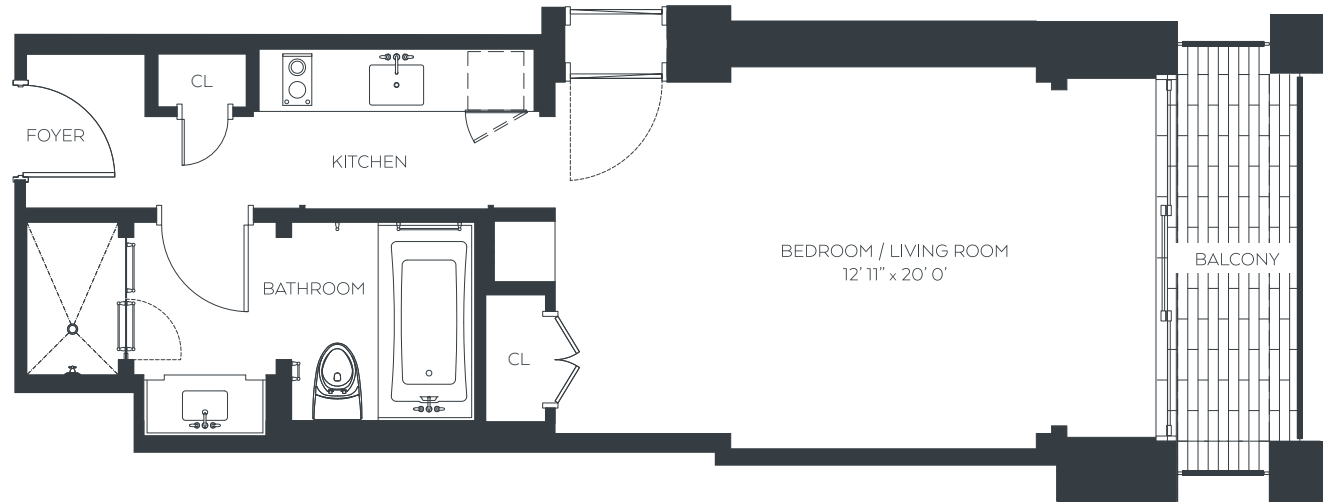
elliottfortlauderdale.com

Compass is a licensed real estate broker. Compass is licensed to do business in Florida as Compass Florida, LLC, as: Compass in California, Colorado, Connecticut, Florida, Georgia, Hawaii, Illinois, Maryland, Massachusetts, Minnesota, New Jersey, New York, North Carolina, Rhode Island, Texas, Virginia, and Washington; Compass RE in Delaware, Idaho, Pennsylvania and Tennessee; Compass Real Estate in Washington, DC, Maine, New Hampshire, Vermont, and Wyoming; Compass Realty Group in Missouri and Kansas; Launch Powered by Compass in Arizona; and Compass Carolinas, LLC in South Carolina. California License # 01991628, 1527235, 1527365, 1356742, 1443761, 1997075, 1935359, 1961027, 1842987, 1869607, 1866771, 1527205, 1079009, 1272467. No guarantee, warranty or representation of any kind is made regarding the completeness or accuracy of descriptions or measurements (including square footage measurements and property condition), such should be independently verified, and Compass expressly disclaims any liability in connection therewith. No financial or legal advice provided. Equal Housing Opportunity. © Compass 2025. 212-913-9058

COMPASS | Probst.

THE ELLIOTT

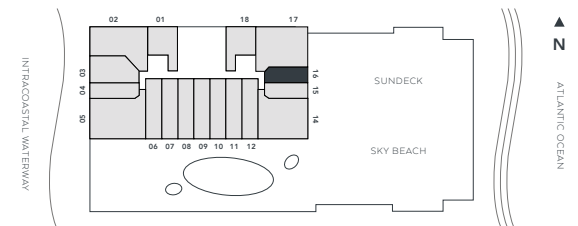
FORT LAUDERDALE BEACH



Floorplan B1.1 Studio \ 1 Bath \ Floors 18

East facing with soaking tub and balcony. Unit comes fully furnished and feature modern gourmet kitchen with premium high-gloss, and darkwood veneer cabinetry complimented by white quartz countertops.

Residence	493 sqft	45.80 M ²
Balcony	91 sqft	8.45 M ²
Total	584 sqft	54.25 M²



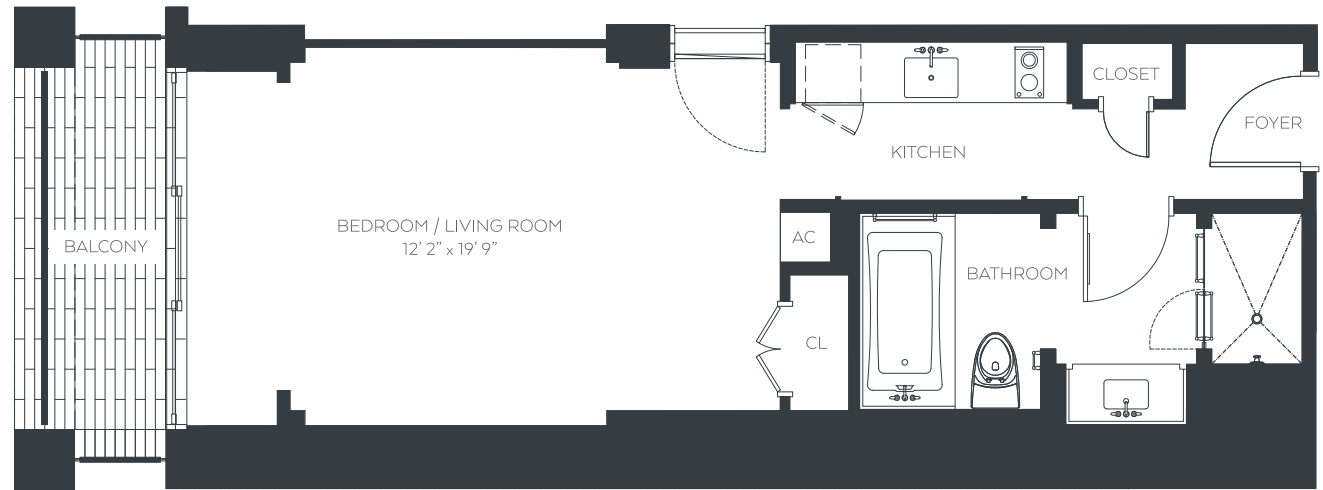
elliottfortlauderdale.com

Compass is a licensed real estate broker. Compass is licensed to do business in Florida as Compass Florida, LLC, as: Compass in California, Colorado, Connecticut, Florida, Georgia, Hawaii, Illinois, Maryland, Massachusetts, Minnesota, New Jersey, New York, North Carolina, Rhode Island, Texas, Virginia, and Washington; Compass RE in Delaware, Idaho, Pennsylvania and Tennessee; Compass Real Estate in Washington, DC, Maine, New Hampshire, Vermont, and Wyoming; Compass Realty Group in Missouri and Kansas; Launch Powered by Compass in Arizona; and Compass Carolinas, LLC in South Carolina. California License # 01991628, 1527235, 1527365, 1356742, 1443761, 1997075, 1935359, 1961027, 1842987, 1869607, 1866771, 1527205, 1079009, 1272467. No guarantee, warranty or representation of any kind is made regarding the completeness or accuracy of descriptions or measurements (including square footage measurements and property condition), such should be independently verified, and Compass expressly disclaims any liability in connection therewith. No financial or legal advice provided. Equal Housing Opportunity. © Compass 2025. 212-913-9058

COMPASS | Probst.

THE ELLIOTT

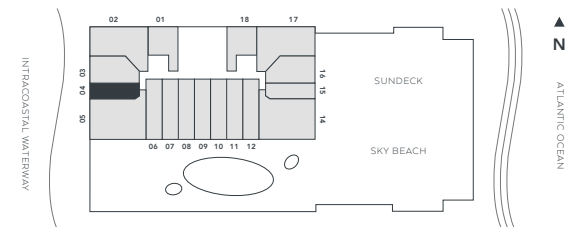
FORT LAUDERDALE BEACH



Floorplan B2 Studio \ 1 Bath \ Floors 7-23

East facing with soaking tub and balcony. Unit comes fully furnished and feature modern gourmet kitchen with premium high-gloss, and darkwood veneer cabinetry complimented by white quartz countertops.

Residence	479 sqft	44.50 M ²
Balcony	52 sqft	4.83 M ²
Total	531 sqft	49.33 M²



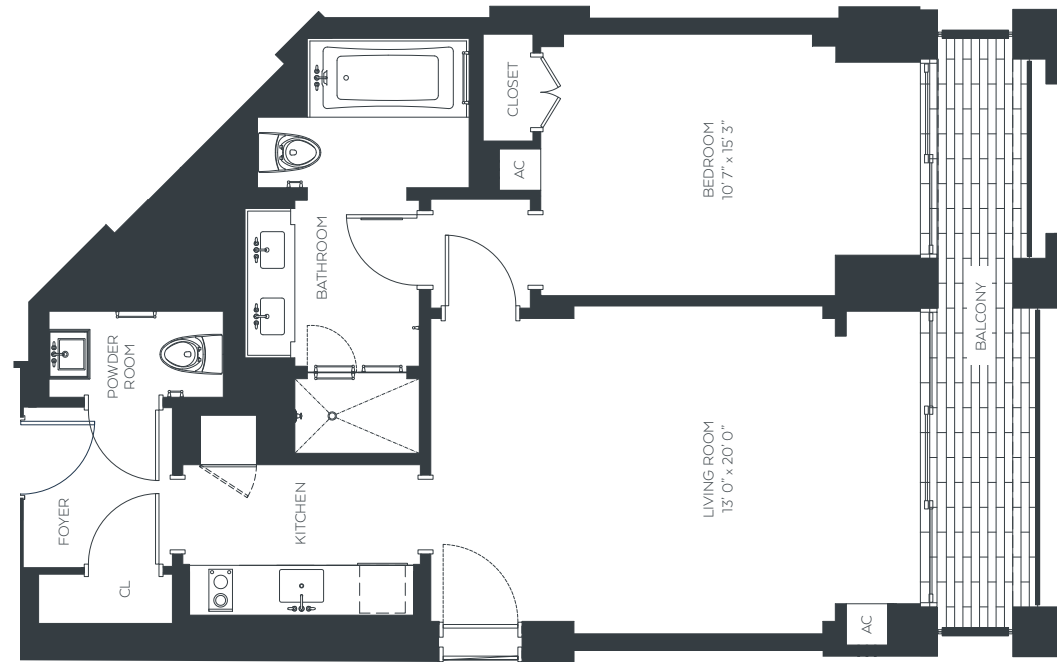
elliottfortlauderdale.com

Compass is a licensed real estate broker. Compass is licensed to do business in Florida as Compass Florida, LLC, as: Compass in California, Colorado, Connecticut, Florida, Georgia, Hawaii, Illinois, Maryland, Massachusetts, Minnesota, New Jersey, New York, North Carolina, Rhode Island, Texas, Virginia, and Washington; Compass RE in Delaware, Idaho, Pennsylvania and Tennessee; Compass Real Estate in Washington, DC, Maine, New Hampshire, Vermont, and Wyoming; Compass Realty Group in Missouri and Kansas; Launch Powered by Compass in Arizona; and Compass Carolinas, LLC in South Carolina. California License # 01991628, 1527235, 1527365, 1356742, 1443761, 1997075, 1935359, 1961027, 1842987, 1869607, 1866771, 1527205, 1079009, 1272467. No guarantee, warranty or representation of any kind is made regarding the completeness or accuracy of descriptions or measurements (including square footage measurements and property condition), such should be independently verified, and Compass expressly disclaims any liability in connection therewith. No financial or legal advice provided. Equal Housing Opportunity. © Compass 2025. 212-913-9058

COMPASS | Probst.

THE ELLIOTT

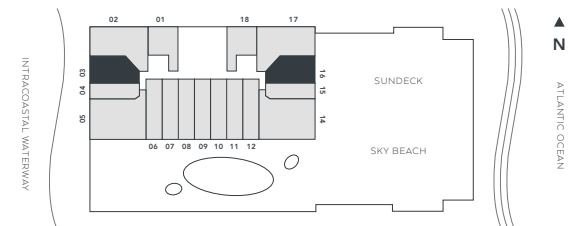
FORT LAUDERDALE BEACH



Floorplan C 1 Bed \ 1.5 Bath \ Floors 7-17

East and west facing options with soaking tub and balcony. Units are fully furnished and feature modern gourmet kitchen with premium high-gloss, and darkwood veneer cabinetry complimented by white quartz countertops.

Residence	794 sqft	73.76 M ²
Balcony	91 sqft	8.45 M ²
Total	885 sqft	82.21 M²



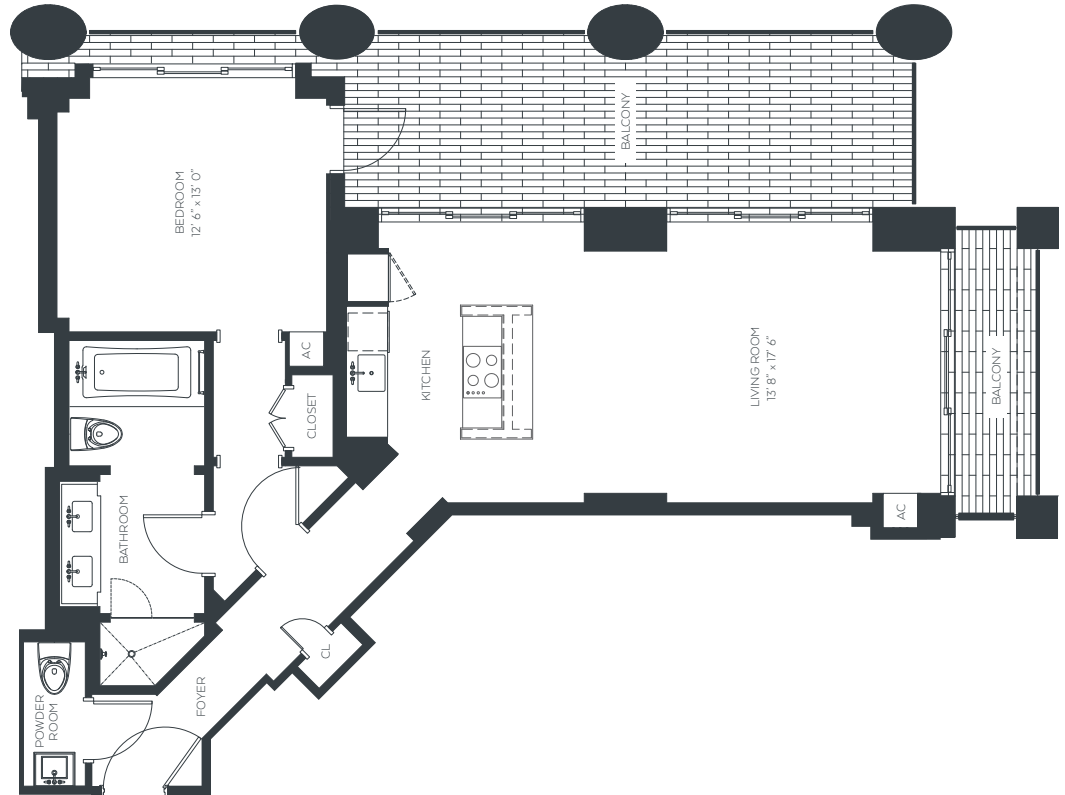
elliottfortlauderdale.com

Compass is a licensed real estate broker. Compass is licensed to do business in Florida as Compass Florida, LLC, as: Compass in California, Colorado, Connecticut, Florida, Georgia, Hawaii, Illinois, Maryland, Massachusetts, Minnesota, New Jersey, New York, North Carolina, Rhode Island, Texas, Virginia, and Washington; Compass RE in Delaware, Idaho, Pennsylvania and Tennessee; Compass Real Estate in Washington, DC, Maine, New Hampshire, Vermont, and Wyoming; Compass Realty Group in Missouri and Kansas; Launch Powered by Compass in Arizona; and Compass Carolinas, LLC in South Carolina. California License # 01991628, 1527235, 1527365, 1356742, 1443761, 1997075, 1935359, 1961027, 1842987, 1869607, 1866771, 1527205, 1079009, 1272467. No guarantee, warranty or representation of any kind is made regarding the completeness or accuracy of descriptions or measurements (including square footage measurements and property condition), such should be independently verified, and Compass expressly disclaims any liability in connection therewith. No financial or legal advice provided. Equal Housing Opportunity. © Compass 2025. 212-913-9058

COMPASS | Probst.

THE ELLIOTT

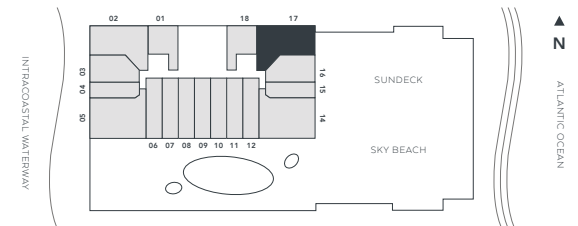
FORT LAUDERDALE BEACH



Floorplan D 1 Bed \ 1.5 Bath \ Floors 7-17

Northeast corner unit. Unit comes fully furnished and feature modern gourmet kitchen with premium high-gloss, and darkwood veneer cabinetry complimented by white quartz countertops.

Residence	918 sqft	85.29 M ²
Balcony	292 sqft	27.12 M ²
Total	1,210 sqft	112.41 M²



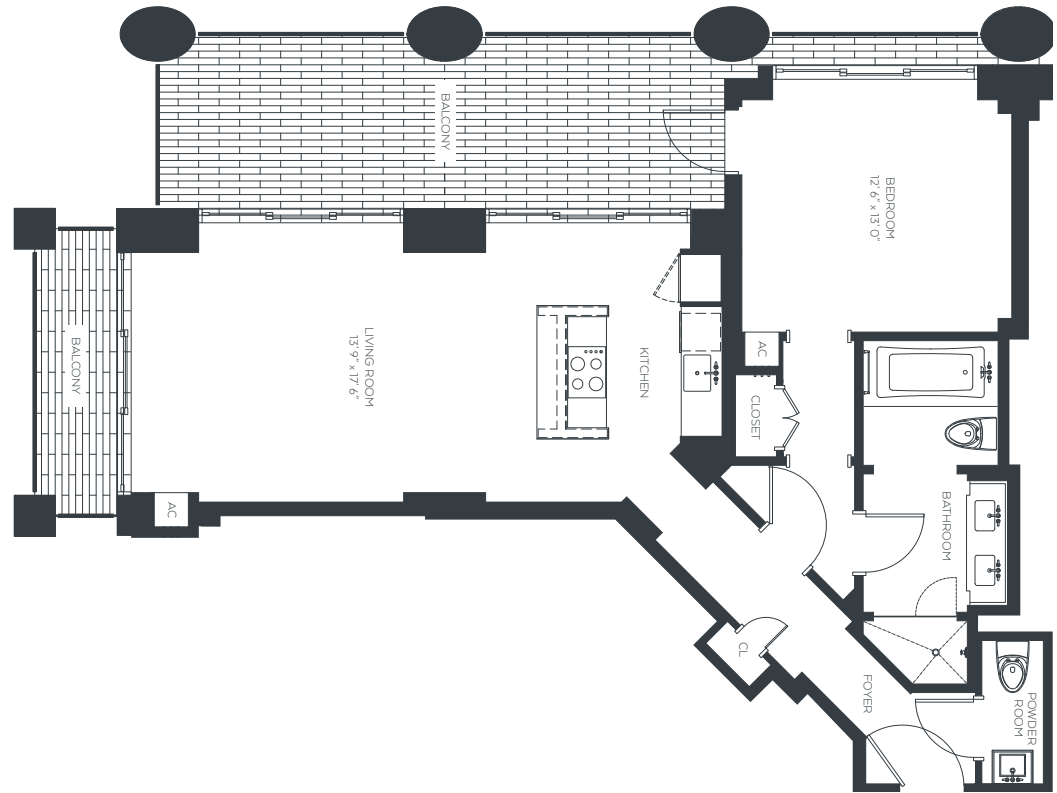
elliottfortlauderdale.com

Compass is a licensed real estate broker. Compass is licensed to do business in Florida as Compass Florida, LLC, as: Compass in California, Colorado, Connecticut, Florida, Georgia, Hawaii, Illinois, Maryland, Massachusetts, Minnesota, New Jersey, New York, North Carolina, Rhode Island, Texas, Virginia, and Washington; Compass RE in Delaware, Idaho, Pennsylvania and Tennessee; Compass Real Estate in Washington, DC, Maine, New Hampshire, Vermont, and Wyoming; Compass Realty Group in Missouri and Kansas; Launch Powered by Compass in Arizona; and Compass Carolinas, LLC in South Carolina. California License # 01991628, 1527235, 1527365, 1356742, 1443761, 1997075, 1935359, 1961027, 1842987, 1869607, 1866771, 1527205, 1079009, 1272467. No guarantee, warranty or representation of any kind is made regarding the completeness or accuracy of descriptions or measurements (including square footage measurements and property condition), such should be independently verified, and Compass expressly disclaims any liability in connection therewith. No financial or legal advice provided. Equal Housing Opportunity. © Compass 2025. 212-913-9058

COMPASS | Probst.

THE ELLIOTT

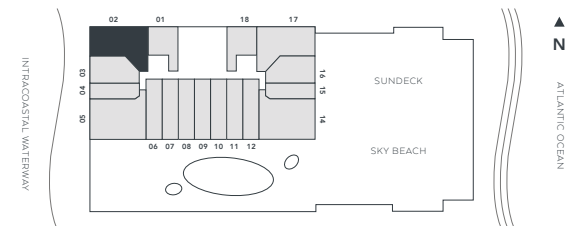
FORT LAUDERDALE BEACH



Floorplan D.1 1 Bed \ 1.5 Bath \ Floors 7-18, 20, 21, 23

Northwest corner unit. Unit comes fully furnished and feature modern gourmet kitchen with premium high-gloss, and darkwood veneer cabinetry complimented by white quartz countertops.

Residence	918 sqft	85.29 M ²
Balcony	292 sqft	27.12 M ²
Total	1,210 sqft	112.41 M²



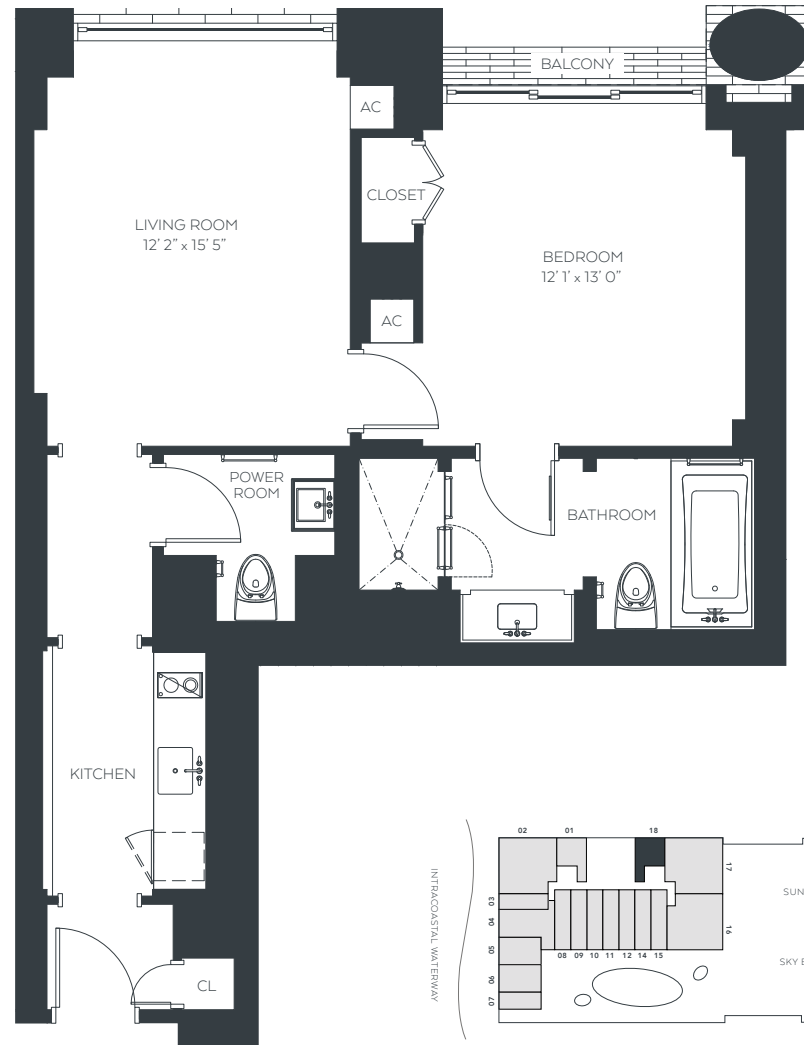
elliottfortlauderdale.com

Compass is a licensed real estate broker. Compass is licensed to do business in Florida as Compass Florida, LLC, as: Compass in California, Colorado, Connecticut, Florida, Georgia, Hawaii, Illinois, Maryland, Massachusetts, Minnesota, New Jersey, New York, North Carolina, Rhode Island, Texas, Virginia, and Washington; Compass RE in Delaware, Idaho, Pennsylvania and Tennessee; Compass Real Estate in Washington, DC, Maine, New Hampshire, Vermont, and Wyoming; Compass Realty Group in Missouri and Kansas; Launch Powered by Compass in Arizona; and Compass Carolinas, LLC in South Carolina. California License # 01991628, 1527235, 1527365, 1356742, 1443761, 1997075, 1935359, 1961027, 1842987, 1869607, 1866771, 1527205, 1079009, 1272467. No guarantee, warranty or representation of any kind is made regarding the completeness or accuracy of descriptions or measurements (including square footage measurements and property condition), such should be independently verified, and Compass expressly disclaims any liability in connection therewith. No financial or legal advice provided. Equal Housing Opportunity. © Compass 2025. 212-913-9058

COMPASS | Probst.

THE ELLIOTT

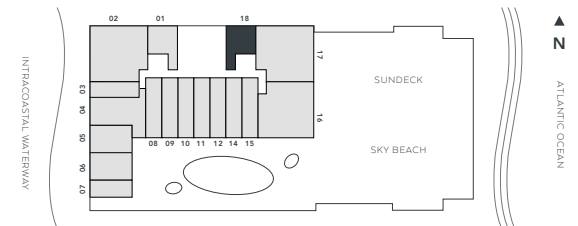
FORT LAUDERDALE BEACH



Floorplan E 1 Bed \ 1.5 Bath \ Floors 6-20

North facing unit with soaking tub. Unit comes fully furnished and feature modern gourmet kitchen with premium high-gloss, and darkwood veneer cabinetry complimented by white quartz countertops.

Residence	767 sqft	71.25 M ²
Balcony	19 sqft	1.77 M ²
Total	786 sqft	73.02 M²



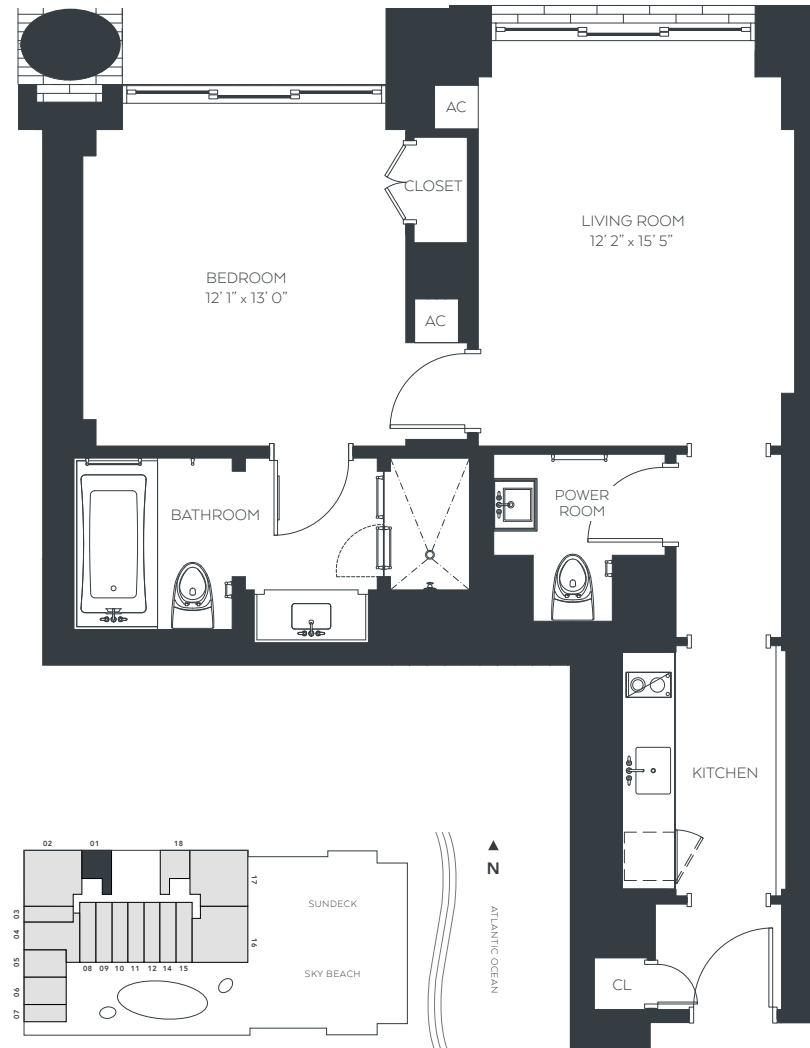
elliottfortlauderdale.com

Compass is a licensed real estate broker. Compass is licensed to do business in Florida as Compass Florida, LLC, as: Compass in California, Colorado, Connecticut, Florida, Georgia, Hawaii, Illinois, Maryland, Massachusetts, Minnesota, New Jersey, New York, North Carolina, Rhode Island, Texas, Virginia, and Washington; Compass RE in Delaware, Idaho, Pennsylvania and Tennessee; Compass Real Estate in Washington, DC, Maine, New Hampshire, Vermont, and Wyoming; Compass Realty Group in Missouri and Kansas; Launch Powered by Compass in Arizona; and Compass Carolinas, LLC in South Carolina. California License # 01991628, 1527235, 1527365, 1356742, 1443761, 1997075, 1935359, 1961027, 1842987, 1869607, 1866771, 1527205, 1079009, 1272467. No guarantee, warranty or representation of any kind is made regarding the completeness or accuracy of descriptions or measurements (including square footage measurements and property condition), such should be independently verified, and Compass expressly disclaims any liability in connection therewith. No financial or legal advice provided. Equal Housing Opportunity. © Compass 2025. 212-913-9058

COMPASS | Probst.

THE ELLIOTT

FORT LAUDERDALE BEACH



Floorplan E.1 1 Bed \ 1.5 Bath \ Floors 6-23

North facing unit with soaking tub. Unit comes fully furnished and feature modern gourmet kitchen with premium high-gloss, and darkwood veneer cabinetry complimented by white quartz countertops.

Residence	767 sqft	71.25 M ²
Balcony	19 sqft	1.77 M ²
Total	786 sqft	73.02 M²

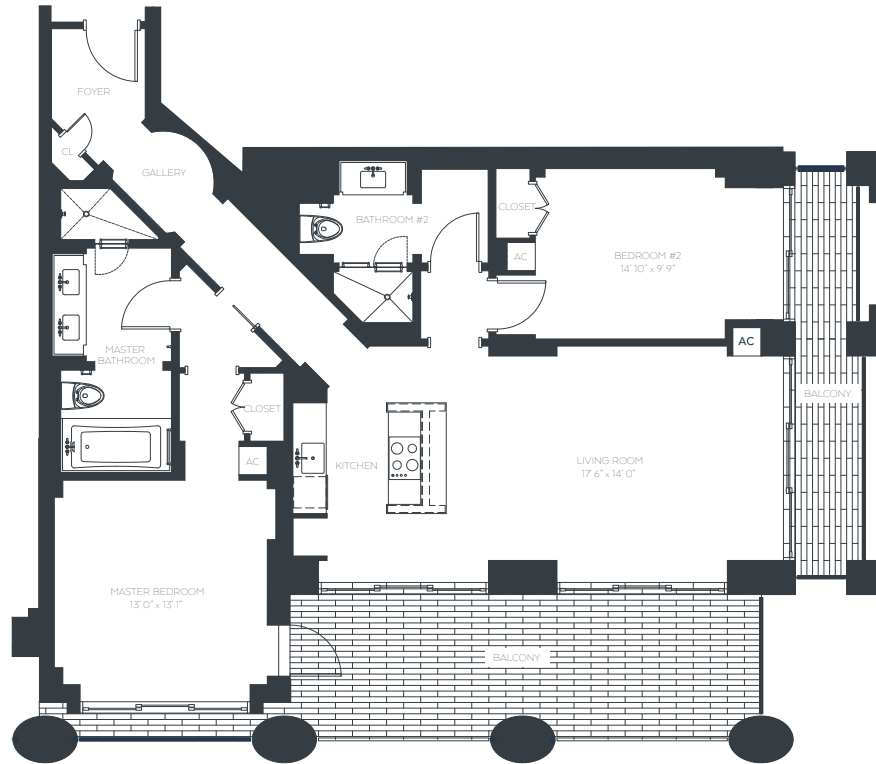
elliottfortlauderdale.com

Compass is a licensed real estate broker. Compass is licensed to do business in Florida as Compass Florida, LLC, as: Compass in California, Colorado, Connecticut, Florida, Georgia, Hawaii, Illinois, Maryland, Massachusetts, Minnesota, New Jersey, New York, North Carolina, Rhode Island, Texas, Virginia, and Washington; Compass RE in Delaware, Idaho, Pennsylvania and Tennessee; Compass Real Estate in Washington, DC, Maine, New Hampshire, Vermont, and Wyoming; Compass Realty Group in Missouri and Kansas; Launch Powered by Compass in Arizona; and Compass Carolinas, LLC in South Carolina. California License # 01991628, 1527235, 1527365, 1356742, 1443761, 1997075, 1935359, 1961027, 1842987, 1869607, 1866771, 1527205, 1079009, 1272467. No guarantee, warranty or representation of any kind is made regarding the completeness or accuracy of descriptions or measurements (including square footage measurements and property condition), such should be independently verified, and Compass expressly disclaims any liability in connection therewith. No financial or legal advice provided. Equal Housing Opportunity. © Compass 2025. 212-913-9058

COMPASS | Probst.

THE ELLIOTT

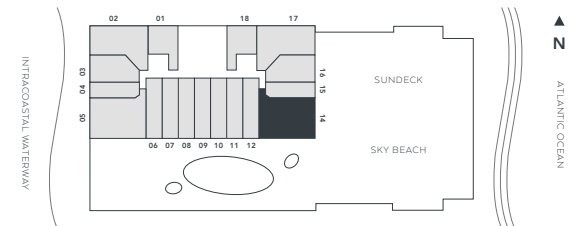
FORT LAUDERDALE BEACH



Floorplan F1 2 Beds \ 2 Baths \ Floors 7-17

Southeast corner unit with kitchen island and wrap around terrace. Unit comes fully furnished and feature modern gourmet kitchen with premium high-gloss, and darkwood veneer cabinetry complimented by white quartz countertops.

Residence	1,207 sqft	112.13 M ²
Balcony	329 sqft	30.56 M ²
Total	1,536 sqft	142.69 M²



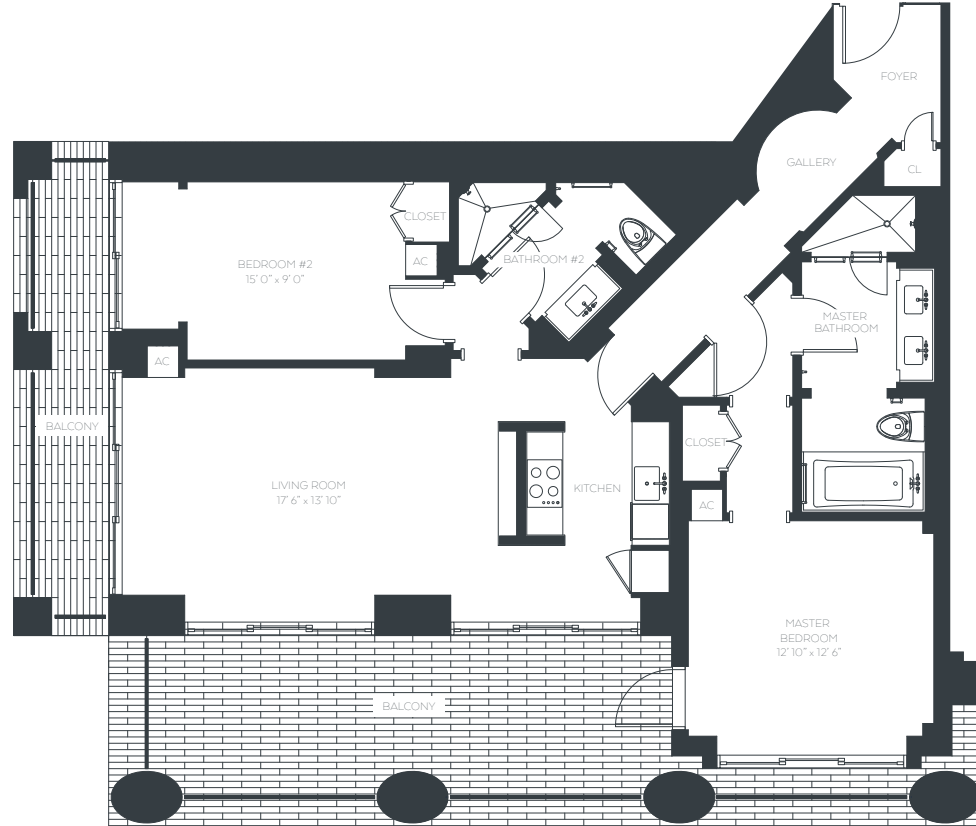
elliottfortlauderdale.com

Compass is a licensed real estate broker. Compass is licensed to do business in Florida as Compass Florida, LLC, as: Compass in California, Colorado, Connecticut, Florida, Georgia, Hawaii, Illinois, Maryland, Massachusetts, Minnesota, New Jersey, New York, North Carolina, Rhode Island, Texas, Virginia, and Washington; Compass RE in Delaware, Idaho, Pennsylvania and Tennessee; Compass Real Estate in Washington, DC, Maine, New Hampshire, Vermont, and Wyoming; Compass Realty Group in Missouri and Kansas; Launch Powered by Compass in Arizona; and Compass Carolinas, LLC in South Carolina. California License # 01991628, 1527235, 1527365, 1356742, 1443761, 1997075, 1935359, 1961027, 1842987, 1869607, 1866771, 1527205, 1079009, 1272467. No guarantee, warranty or representation of any kind is made regarding the completeness or accuracy of descriptions or measurements (including square footage measurements and property condition), such should be independently verified, and Compass expressly disclaims any liability in connection therewith. No financial or legal advice provided. Equal Housing Opportunity. © Compass 2025. 212-913-9058

COMPASS | Probst.

THE ELLIOTT

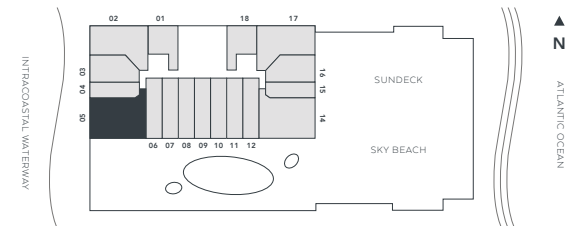
FORT LAUDERDALE BEACH



Floorplan F2 2 Beds \ 2 Baths \ Floors 8-23

Southwest corner unit with kitchen island and wrap around terrace. Unit comes fully furnished and feature modern gourmet kitchen with premium high-gloss, and darkwood veneer cabinetry complimented by white quartz countertops.

Residence	1,184 sqft	109.99 M ²
Balcony	329 sqft	30.57 M ²
Total	1,513 sqft	140.56 M²



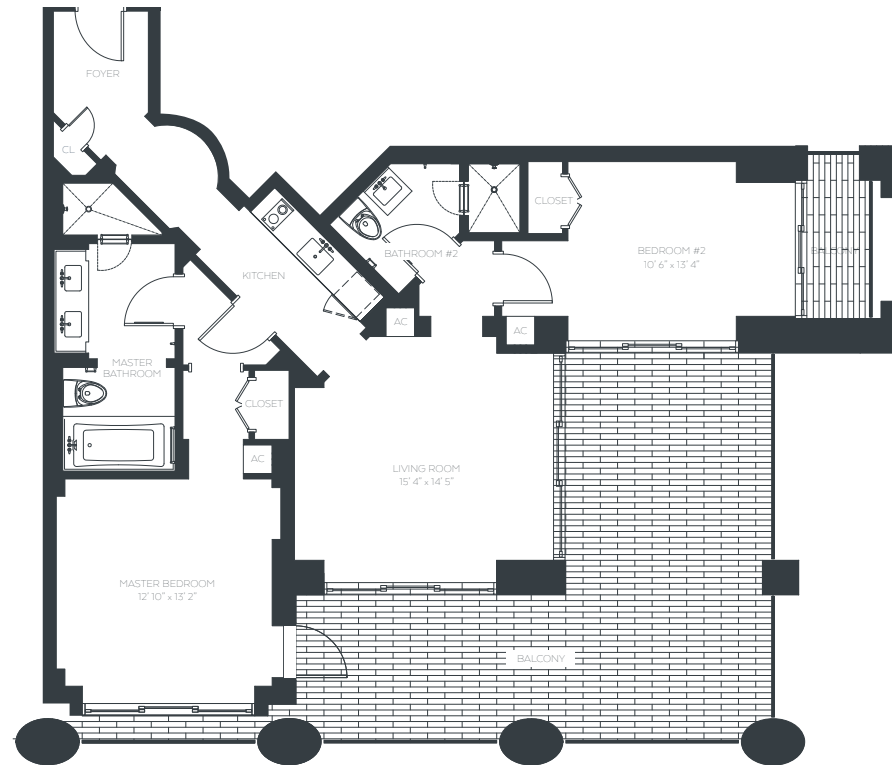
elliottfortlauderdale.com

Compass is a licensed real estate broker. Compass is licensed to do business in Florida as Compass Florida, LLC, as: Compass in California, Colorado, Connecticut, Florida, Georgia, Hawaii, Illinois, Maryland, Massachusetts, Minnesota, New Jersey, New York, North Carolina, Rhode Island, Texas, Virginia, and Washington; Compass RE in Delaware, Idaho, Pennsylvania and Tennessee; Compass Real Estate in Washington, DC, Maine, New Hampshire, Vermont, and Wyoming; Compass Realty Group in Missouri and Kansas; Launch Powered by Compass in Arizona; and Compass Carolinas, LLC in South Carolina. California License # 01991628, 1527235, 1527365, 1356742, 1443761, 1997075, 1935359, 1961027, 1842987, 1869607, 1866771, 1527205, 1079009, 1272467. No guarantee, warranty or representation of any kind is made regarding the completeness or accuracy of descriptions or measurements (including square footage measurements and property condition), such should be independently verified, and Compass expressly disclaims any liability in connection therewith. No financial or legal advice provided. Equal Housing Opportunity. © Compass 2025. 212-913-9058

COMPASS | Probst.

THE ELLIOTT

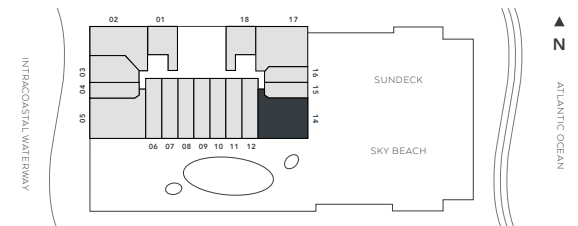
FORT LAUDERDALE BEACH



Floorplan L1 2 Beds \ 2 Baths \ Floor 18

Southeast corner unit with wrap around terrace. Unit comes fully furnished and feature modern gourmet kitchen with premium high-gloss, and darkwood veneer cabinetry complimented by white quartz countertops.

Residence	1,184 sqft	109.99 M ²
Balcony	329 sqft	30.57 M ²
Total	1,513 sqft	140.56 M²



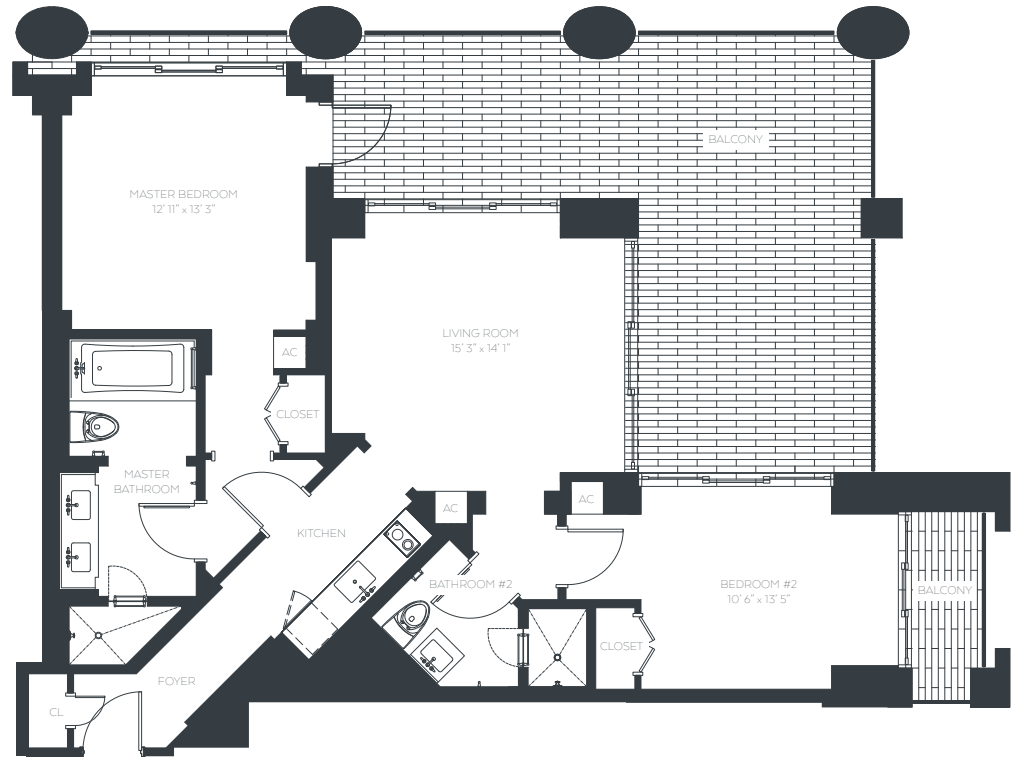
elliottfortlauderdale.com

Compass is a licensed real estate broker. Compass is licensed to do business in Florida as Compass Florida, LLC, as: Compass in California, Colorado, Connecticut, Florida, Georgia, Hawaii, Illinois, Maryland, Massachusetts, Minnesota, New Jersey, New York, North Carolina, Rhode Island, Texas, Virginia, and Washington; Compass RE in Delaware, Idaho, Pennsylvania and Tennessee; Compass Real Estate in Washington, DC, Maine, New Hampshire, Vermont, and Wyoming; Compass Realty Group in Missouri and Kansas; Launch Powered by Compass in Arizona; and Compass Carolinas, LLC in South Carolina. California License # 01991628, 1527235, 1527365, 1356742, 1443761, 1997075, 1935359, 1961027, 1842987, 1869607, 1866771, 1527205, 1079009, 1272467. No guarantee, warranty or representation of any kind is made regarding the completeness or accuracy of descriptions or measurements (including square footage measurements and property condition), such should be independently verified, and Compass expressly disclaims any liability in connection therewith. No financial or legal advice provided. Equal Housing Opportunity. © Compass 2025. 212-913-9058

COMPASS | Probst.

THE ELLIOTT

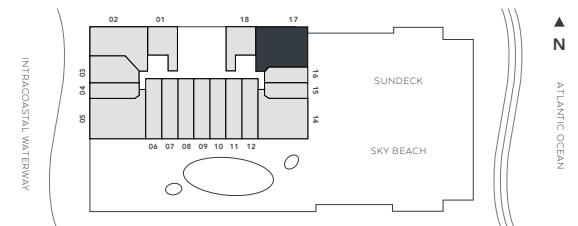
FORT LAUDERDALE BEACH



Floorplan L2 2 Beds \ 2 Baths \ Floor 18

Northeast corner unit with wrap-around balcony. Unit comes fully furnished and feature modern gourmet kitchen with premium high-gloss, and darkwood veneer cabinetry complimented by white quartz countertops.

Residence	997 sqft	92.62 M ²
Balcony	406 sqft	37.71 M ²
Total	1,403 sqft	130.34 M²



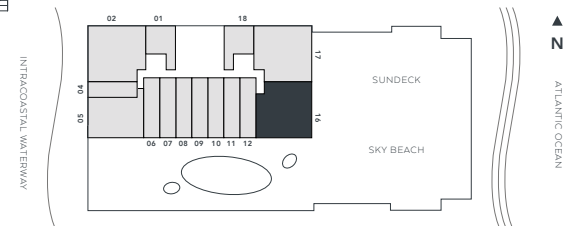
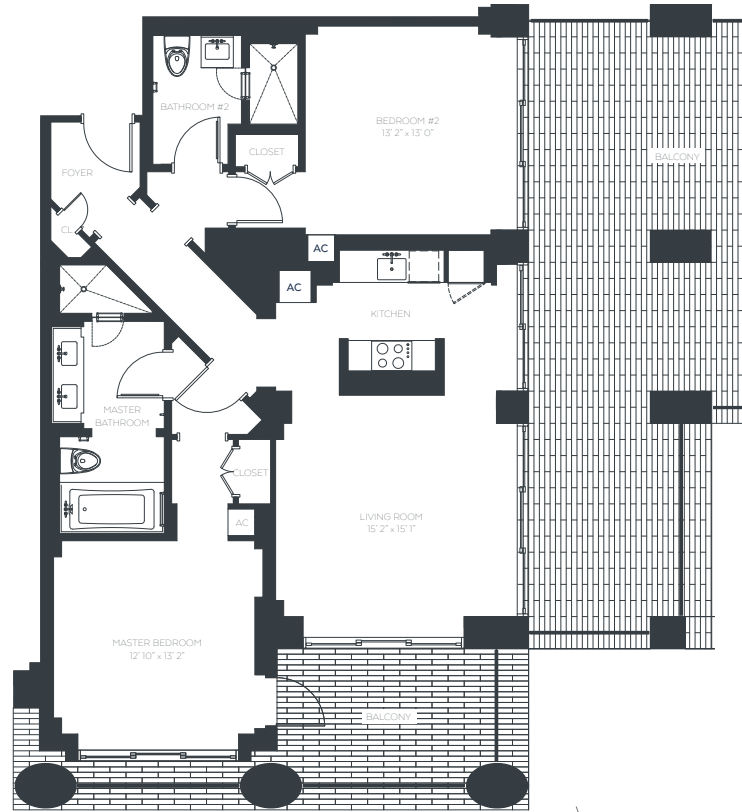
elliottfortlauderdale.com

Compass is a licensed real estate broker. Compass is licensed to do business in Florida as Compass Florida, LLC, as: Compass in California, Colorado, Connecticut, Florida, Georgia, Hawaii, Illinois, Maryland, Massachusetts, Minnesota, New Jersey, New York, North Carolina, Rhode Island, Texas, Virginia, and Washington; Compass RE in Delaware, Idaho, Pennsylvania and Tennessee; Compass Real Estate in Washington, DC, Maine, New Hampshire, Vermont, and Wyoming; Compass Realty Group in Missouri and Kansas; Launch Powered by Compass in Arizona; and Compass Carolinas, LLC in South Carolina. California License # 01991628, 1527235, 1527365, 1356742, 1443761, 1997075, 1935359, 1961027, 1842987, 1869607, 1866771, 1527205, 1079009, 1272467. No guarantee, warranty or representation of any kind is made regarding the completeness or accuracy of descriptions or measurements (including square footage measurements and property condition), such should be independently verified, and Compass expressly disclaims any liability in connection therewith. No financial or legal advice provided. Equal Housing Opportunity. © Compass 2025. 212-913-9058

COMPASS | Probst.

THE ELLIOTT

FORT LAUDERDALE BEACH



Floorplan M1 2 Beds \ 2 Baths \ Floors 19,20

Southeast corner unit with kitchen island and wrap around terrace. Unit comes fully furnished and feature modern gourmet kitchen with premium high-gloss, and darkwood veneer cabinetry complimented by white quartz countertops.

Residence	1,198 sqft	111.29 M ²
Balcony	676 sqft	62.80 M ²
Total	1,874 sqft	174.10 M²

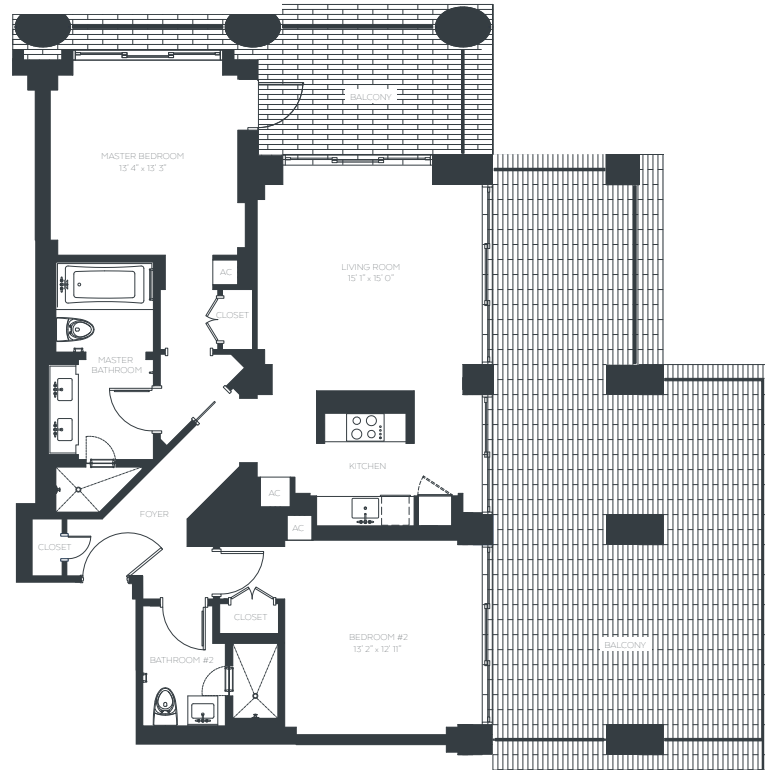
elliottfortlauderdale.com

Compass is a licensed real estate broker. Compass is licensed to do business in Florida as Compass Florida, LLC, as: Compass in California, Colorado, Connecticut, Florida, Georgia, Hawaii, Illinois, Maryland, Massachusetts, Minnesota, New Jersey, New York, North Carolina, Rhode Island, Texas, Virginia, and Washington; Compass RE in Delaware, Idaho, Pennsylvania and Tennessee; Compass Real Estate in Washington, DC, Maine, New Hampshire, Vermont, and Wyoming; Compass Realty Group in Missouri and Kansas; Launch Powered by Compass in Arizona; and Compass Carolinas, LLC in South Carolina. California License # 01991628, 1527235, 1527365, 1356742, 1443761, 1997075, 1935359, 1961027, 1842987, 1869607, 1866771, 1527205, 1079009, 1272467. No guarantee, warranty or representation of any kind is made regarding the completeness or accuracy of descriptions or measurements (including square footage measurements and property condition), such should be independently verified, and Compass expressly disclaims any liability in connection therewith. No financial or legal advice provided. Equal Housing Opportunity. © Compass 2025. 212-913-9058

COMPASS | Probst.

THE ELLIOTT

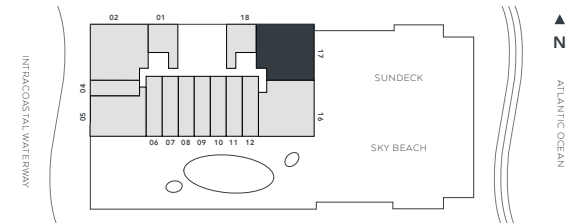
FORT LAUDERDALE BEACH



Floorplan M2 2 Beds \ 2 Baths \ Floors 19,20

Northeast corner unit with kitchen island and wrap around balcony. Unit comes fully furnished and feature modern gourmet kitchen with premium high-gloss, and darkwood veneer cabinetry complimented by white quartz countertops.

Residence	1,186 sqft	110.18 M ²
Balcony	676 sqft	62.80 M ²
Total	1,862 sqft	172.98 M²



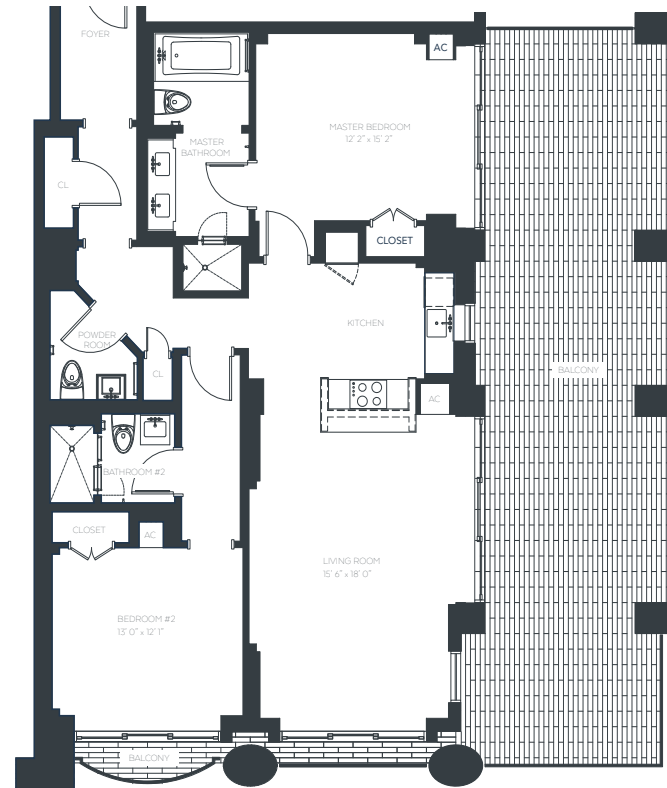
elliottfortlauderdale.com

Compass is a licensed real estate broker. Compass is licensed to do business in Florida as Compass Florida, LLC, as: Compass in California, Colorado, Connecticut, Florida, Georgia, Hawaii, Illinois, Maryland, Massachusetts, Minnesota, New Jersey, New York, North Carolina, Rhode Island, Texas, Virginia, and Washington; Compass RE in Delaware, Idaho, Pennsylvania and Tennessee; Compass Real Estate in Washington, DC, Maine, New Hampshire, Vermont, and Wyoming; Compass Realty Group in Missouri and Kansas; Launch Powered by Compass in Arizona; and Compass Carolinas, LLC in South Carolina. California License # 01991628, 1527235, 1527365, 1356742, 1443761, 1997075, 1935359, 1961027, 1842987, 1869607, 1866771, 1527205, 1079009, 1272467. No guarantee, warranty or representation of any kind is made regarding the completeness or accuracy of descriptions or measurements (including square footage measurements and property condition), such should be independently verified, and Compass expressly disclaims any liability in connection therewith. No financial or legal advice provided. Equal Housing Opportunity. © Compass 2025. 212-913-9058

COMPASS | Probst.

THE ELLIOTT

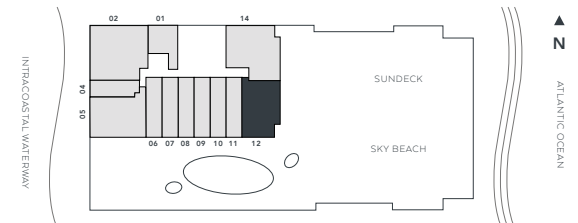
FORT LAUDERDALE BEACH



Floorplan N 2 Beds \ 2.5 Baths \ Floors 21,22

Southeast corner unit. Unit comes fully furnished and feature modern gourmet kitchen with premium high-gloss, and darkwood veneer cabinetry complimented by white quartz countertops.

Residence	1,375 sqft	127.74 M ²
Balcony	627 sqft	58.25 M ²
Total	2,002 sqft	185.99 M²



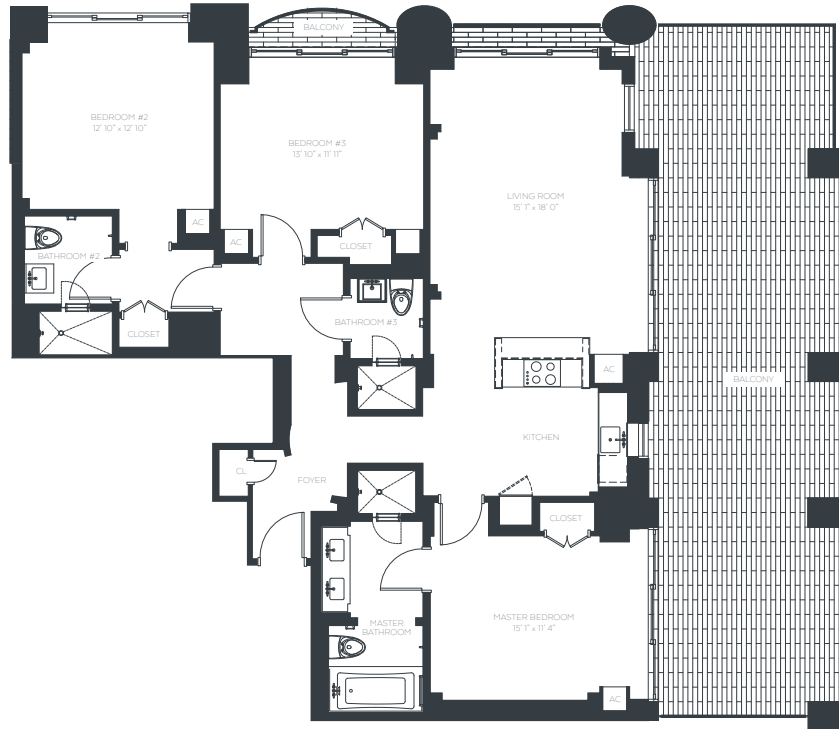
elliottfortlauderdale.com

Compass is a licensed real estate broker. Compass is licensed to do business in Florida as Compass Florida, LLC, as: Compass in California, Colorado, Connecticut, Florida, Georgia, Hawaii, Illinois, Maryland, Massachusetts, Minnesota, New Jersey, New York, North Carolina, Rhode Island, Texas, Virginia, and Washington; Compass RE in Delaware, Idaho, Pennsylvania and Tennessee; Compass Real Estate in Washington, DC, Maine, New Hampshire, Vermont, and Wyoming; Compass Realty Group in Missouri and Kansas; Launch Powered by Compass in Arizona; and Compass Carolinas, LLC in South Carolina. California License # 01991628, 1527235, 1527365, 1356742, 1443761, 1997075, 1935359, 1961027, 1842987, 1869607, 1866771, 1527205, 1079009, 1272467. No guarantee, warranty or representation of any kind is made regarding the completeness or accuracy of descriptions or measurements (including square footage measurements and property condition), such should be independently verified, and Compass expressly disclaims any liability in connection therewith. No financial or legal advice provided. Equal Housing Opportunity. © Compass 2025. 212-913-9058

COMPASS | Probst.

THE ELLIOTT

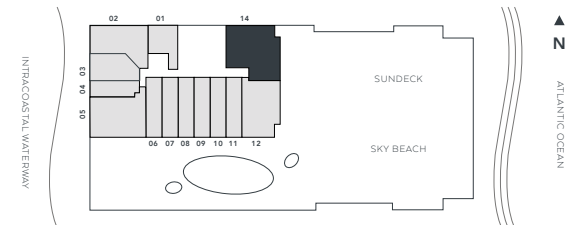
FORT LAUDERDALE BEACH



Floorplan P1 3 Beds \ 3 Baths \ Floor 21

Northeast corner unit with wrap around balcony. Unit comes fully furnished and feature modern gourmet kitchen with premium high-gloss, and darkwood veneer cabinetry complimented by white quartz countertops.

Residence	1,592 sqft	147.90 M ²
Balcony	627 sqft	58.25 M ²
Total	2,219 sqft	206.15 M²



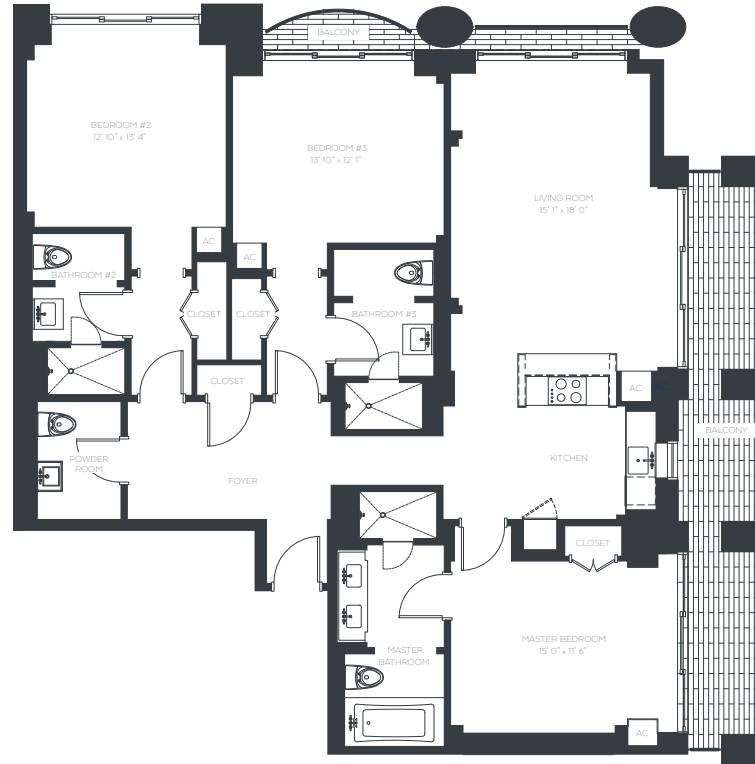
elliottfortlauderdale.com

Compass is a licensed real estate broker. Compass is licensed to do business in Florida as Compass Florida, LLC, as: Compass in California, Colorado, Connecticut, Florida, Georgia, Hawaii, Illinois, Maryland, Massachusetts, Minnesota, New Jersey, New York, North Carolina, Rhode Island, Texas, Virginia, and Washington; Compass RE in Delaware, Idaho, Pennsylvania and Tennessee; Compass Real Estate in Washington, DC, Maine, New Hampshire, Vermont, and Wyoming; Compass Realty Group in Missouri and Kansas; Launch Powered by Compass in Arizona; and Compass Carolinas, LLC in South Carolina. California License # 01991628, 1527235, 1527365, 1356742, 1443761, 1997075, 1935359, 1961027, 1842987, 1869607, 1866771, 1527205, 1079009, 1272467. No guarantee, warranty or representation of any kind is made regarding the completeness or accuracy of descriptions or measurements (including square footage measurements and property condition), such should be independently verified, and Compass expressly disclaims any liability in connection therewith. No financial or legal advice provided. Equal Housing Opportunity. © Compass 2025. 212-913-9058

COMPASS | Probst.

THE ELLIOTT

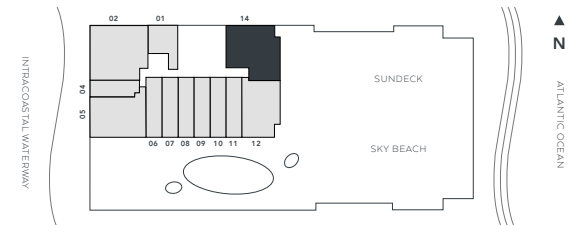
FORT LAUDERDALE BEACH



Floorplan P2 3 Beds \ 3.5 Baths \ Floor 22

Northeast corner unit with balcony and terrace areas. Unit comes fully furnished and feature modern gourmet kitchen with premium high-gloss, and darkwood veneer cabinetry complimented by white quartz countertops.

Residence	1,749 sqft	162.48 M ²
Balcony	212 sqft	19.69 M ²
Total	1,961 sqft	182.18 M²



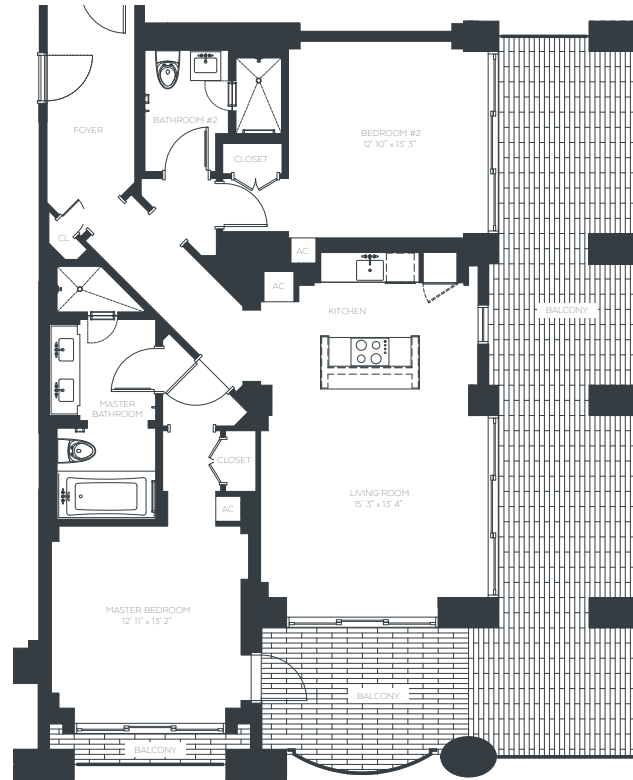
elliottfortlauderdale.com

Compass is a licensed real estate broker. Compass is licensed to do business in Florida as Compass Florida, LLC, as: Compass in California, Colorado, Connecticut, Florida, Georgia, Hawaii, Illinois, Maryland, Massachusetts, Minnesota, New Jersey, New York, North Carolina, Rhode Island, Texas, Virginia, and Washington; Compass RE in Delaware, Idaho, Pennsylvania and Tennessee; Compass Real Estate in Washington, DC, Maine, New Hampshire, Vermont, and Wyoming; Compass Realty Group in Missouri and Kansas; Launch Powered by Compass in Arizona; and Compass Carolinas, LLC in South Carolina. California License # 01991628, 1527235, 1527365, 1356742, 1443761, 1997075, 1935359, 1961027, 1842987, 1869607, 1866771, 1527205, 1079009, 1272467. No guarantee, warranty or representation of any kind is made regarding the completeness or accuracy of descriptions or measurements (including square footage measurements and property condition), such should be independently verified, and Compass expressly disclaims any liability in connection therewith. No financial or legal advice provided. Equal Housing Opportunity. © Compass 2025. 212-913-9058

COMPASS | Probst.

THE ELLIOTT

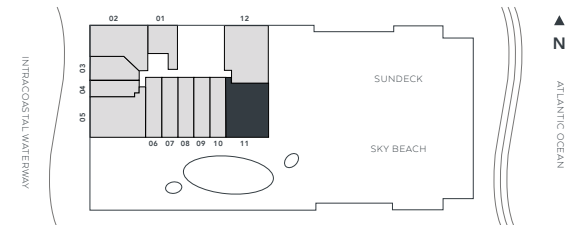
FORT LAUDERDALE BEACH



Floorplan Q 2 Beds \ 2 Baths \ Floor 23

Southeast corner unit with kitchen island and wrap around balcony. Unit comes fully furnished and feature modern gourmet kitchen with premium high-gloss, and darkwood veneer cabinetry complimented by white quartz countertops.

Residence	1,271 sqft	118.07 M ²
Balcony	577 sqft	53.60 M ²
Total	1,848 sqft	171.68 M²



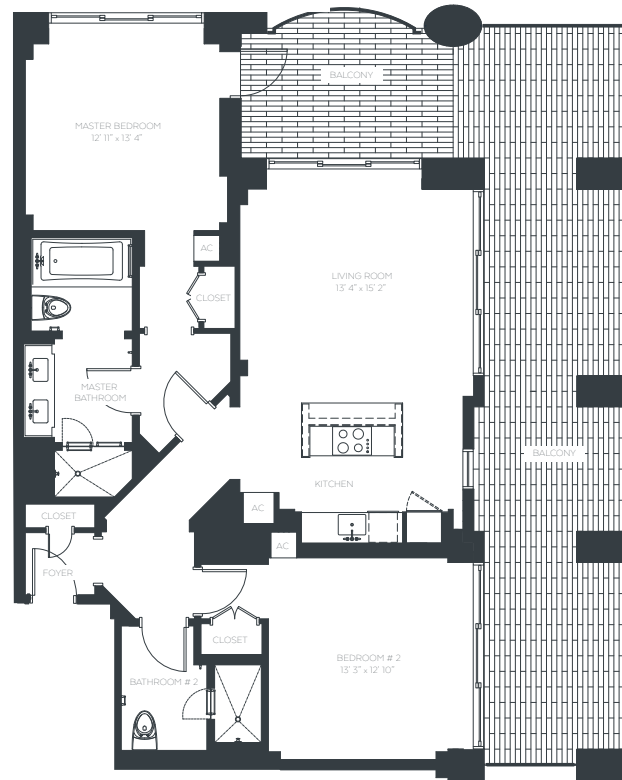
elliottfortlauderdale.com

Compass is a licensed real estate broker. Compass is licensed to do business in Florida as Compass Florida, LLC, as: Compass in California, Colorado, Connecticut, Florida, Georgia, Hawaii, Illinois, Maryland, Massachusetts, Minnesota, New Jersey, New York, North Carolina, Rhode Island, Texas, Virginia, and Washington; Compass RE in Delaware, Idaho, Pennsylvania and Tennessee; Compass Real Estate in Washington, DC, Maine, New Hampshire, Vermont, and Wyoming; Compass Realty Group in Missouri and Kansas; Launch Powered by Compass in Arizona; and Compass Carolinas, LLC in South Carolina. California License # 01991628, 1527235, 1527365, 1356742, 1443761, 1997075, 1935359, 1961027, 1842987, 1869607, 1866771, 1527205, 1079009, 1272467. No guarantee, warranty or representation of any kind is made regarding the completeness or accuracy of descriptions or measurements (including square footage measurements and property condition), such should be independently verified, and Compass expressly disclaims any liability in connection therewith. No financial or legal advice provided. Equal Housing Opportunity. © Compass 2025. 212-913-9058

COMPASS | Probst.

THE ELLIOTT

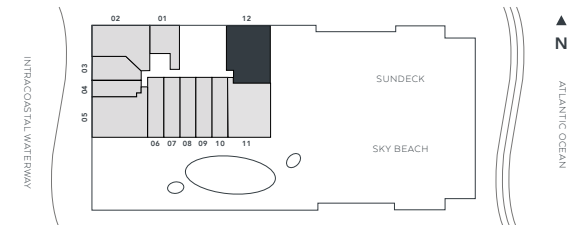
FORT LAUDERDALE BEACH



Floorplan R 2 Beds \ 2 Baths \ Floor 23

Northeast corner unit with wrap around balcony. Unit comes fully furnished and feature modern gourmet kitchen with premium high-gloss, and darkwood veneer cabinetry complimented by white quartz countertops.

Residence	1,213 sqft	112.69 M ²
Balcony	554 sqft	51.46 M ²
Total	1,767 sqft	164.15 M²



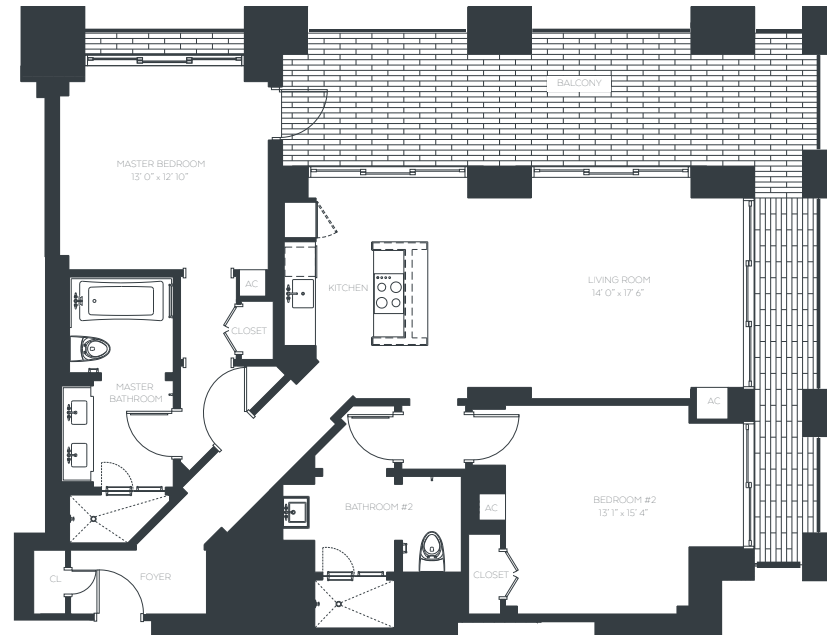
elliottfortlauderdale.com

Compass is a licensed real estate broker. Compass is licensed to do business in Florida as Compass Florida, LLC, as: Compass in California, Colorado, Connecticut, Florida, Georgia, Hawaii, Illinois, Maryland, Massachusetts, Minnesota, New Jersey, New York, North Carolina, Rhode Island, Texas, Virginia, and Washington; Compass RE in Delaware, Idaho, Pennsylvania and Tennessee; Compass Real Estate in Washington, DC, Maine, New Hampshire, Vermont, and Wyoming; Compass Realty Group in Missouri and Kansas; Launch Powered by Compass in Arizona; and Compass Carolinas, LLC in South Carolina. California License # 01991628, 1527235, 1527365, 1356742, 1443761, 1997075, 1935359, 1961027, 1842987, 1869607, 1866771, 1527205, 1079009, 1272467. No guarantee, warranty or representation of any kind is made regarding the completeness or accuracy of descriptions or measurements (including square footage measurements and property condition), such should be independently verified, and Compass expressly disclaims any liability in connection therewith. No financial or legal advice provided. Equal Housing Opportunity. © Compass 2025. 212-913-9058

COMPASS | Probst.

THE ELLIOTT

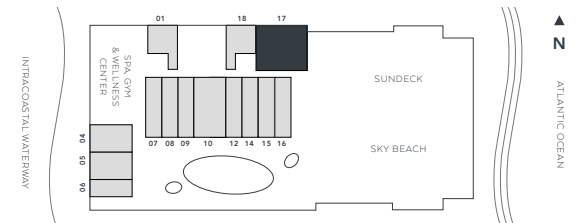
FORT LAUDERDALE BEACH



Floorplan S 2 Beds \ 2 Baths \ Floor 6

Northeast corner unit with split floorplan and wrap around balcony. Unit comes fully furnished and feature modern gourmet kitchen with premium high-gloss, and darkwood veneer cabinetry complimented by white quartz countertops.

Residence	1,380 sqft	128.20 M ²
Balcony	292 sqft	27.12 M ²
Total	1,672 sqft	155.33 M²



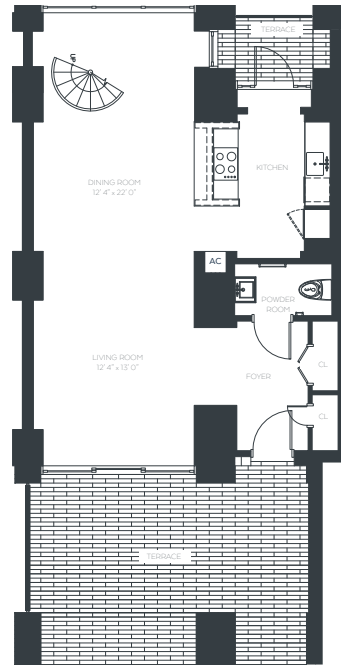
elliottfortlauderdale.com

Compass is a licensed real estate broker. Compass is licensed to do business in Florida as Compass Florida, LLC, as: Compass in California, Colorado, Connecticut, Florida, Georgia, Hawaii, Illinois, Maryland, Massachusetts, Minnesota, New Jersey, New York, North Carolina, Rhode Island, Texas, Virginia, and Washington; Compass RE in Delaware, Idaho, Pennsylvania and Tennessee; Compass Real Estate in Washington, DC, Maine, New Hampshire, Vermont, and Wyoming; Compass Realty Group in Missouri and Kansas; Launch Powered by Compass in Arizona; and Compass Carolinas, LLC in South Carolina. California License # 01991628, 1527235, 1527365, 1356742, 1443761, 1997075, 1935359, 1961027, 1842987, 1869607, 1866771, 1527205, 1079009, 1272467. No guarantee, warranty or representation of any kind is made regarding the completeness or accuracy of descriptions or measurements (including square footage measurements and property condition), such should be independently verified, and Compass expressly disclaims any liability in connection therewith. No financial or legal advice provided. Equal Housing Opportunity. © Compass 2025. 212-913-9058

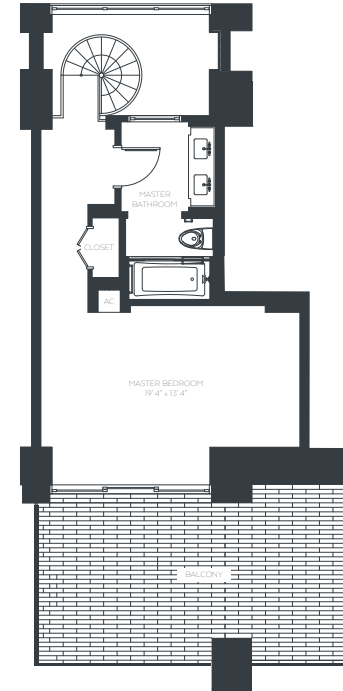
COMPASS | Probst.

THE ELLIOTT

FORT LAUDERDALE BEACH



LEVEL 1

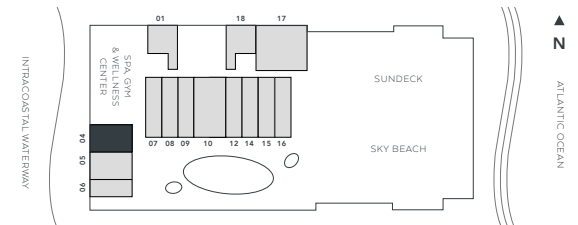


LEVEL 2

Floorplan T1 1 Bed \ 1.5 Baths \ Floor 6

Two-story pool-level unit. Unit comes fully furnished and feature modern gourmet kitchen with premium high-gloss, and darkwood veneer cabinetry complimented by white quartz countertops.

Residence	1,126 sqft	104.60 M ²
Balcony	329 sqft	30.56 M ²
Total	1,455 sqft	135.16 M²



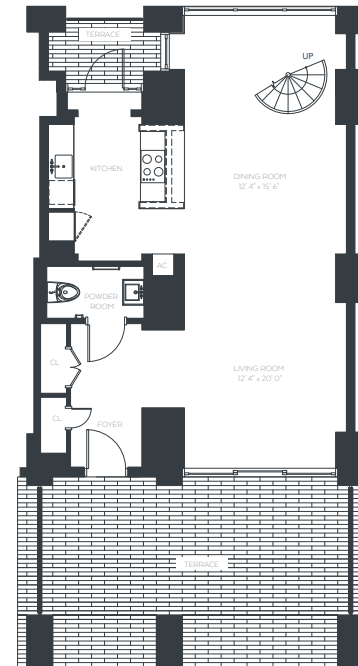
elliottfortlauderdale.com

Compass is a licensed real estate broker. Compass is licensed to do business in Florida as Compass Florida, LLC, as: Compass in California, Colorado, Connecticut, Florida, Georgia, Hawaii, Illinois, Maryland, Massachusetts, Minnesota, New Jersey, New York, North Carolina, Rhode Island, Texas, Virginia, and Washington; Compass RE in Delaware, Idaho, Pennsylvania and Tennessee; Compass Real Estate in Washington, DC, Maine, New Hampshire, Vermont, and Wyoming; Compass Realty Group in Missouri and Kansas; Launch Powered by Compass in Arizona; and Compass Carolinas, LLC in South Carolina. California License # 01991628, 1527235, 1527365, 1356742, 1443761, 1997075, 1935359, 1961027, 1842987, 1869607, 1866771, 1527205, 1079009, 1272467. No guarantee, warranty or representation of any kind is made regarding the completeness or accuracy of descriptions or measurements (including square footage measurements and property condition), such should be independently verified, and Compass expressly disclaims any liability in connection therewith. No financial or legal advice provided. Equal Housing Opportunity. © Compass 2025. 212-913-9058

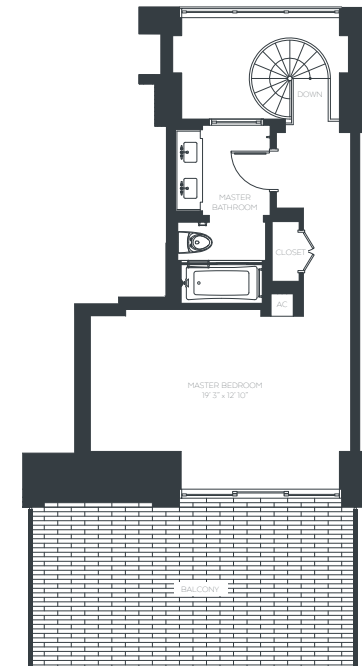
COMPASS | Probst.

THE ELLIOTT

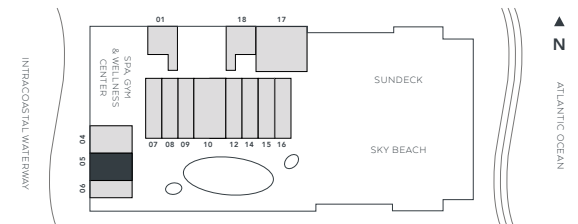
FORT LAUDERDALE BEACH



LEVEL 1



LEVEL 2



Floorplan T2 1 Bed \ 1.5 Baths \ Floor 6

Two-story pool-level unit with terrace and balcony. Unit comes fully furnished and feature modern gourmet kitchen with premium high-gloss, and darkwood veneer cabinetry complimented by white quartz countertops.

Residence	1,139 sqft	108.81 M ²
Balcony	329 sqft	30.56 M ²
Total	1,468 sqft	139.37 M²

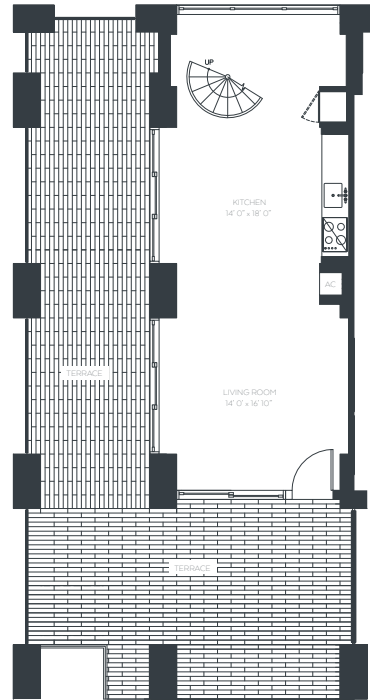
elliottfortlauderdale.com

Compass is a licensed real estate broker. Compass is licensed to do business in Florida as Compass Florida, LLC, as: Compass in California, Colorado, Connecticut, Florida, Georgia, Hawaii, Illinois, Maryland, Massachusetts, Minnesota, New Jersey, New York, North Carolina, Rhode Island, Texas, Virginia, and Washington; Compass RE in Delaware, Idaho, Pennsylvania and Tennessee; Compass Real Estate in Washington, DC, Maine, New Hampshire, Vermont, and Wyoming; Compass Realty Group in Missouri and Kansas; Launch Powered by Compass in Arizona; and Compass Carolinas, LLC in South Carolina. California License # 01991628, 1527235, 1527365, 1356742, 1443761, 1997075, 1935359, 1961027, 1842987, 1869607, 1866771, 1527205, 1079009, 1272467. No guarantee, warranty or representation of any kind is made regarding the completeness or accuracy of descriptions or measurements (including square footage measurements and property condition), such should be independently verified, and Compass expressly disclaims any liability in connection therewith. No financial or legal advice provided. Equal Housing Opportunity. © Compass 2025. 212-913-9058

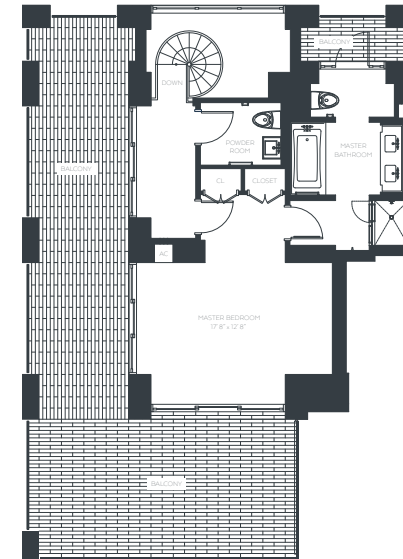
COMPASS | Probst.

THE ELLIOTT

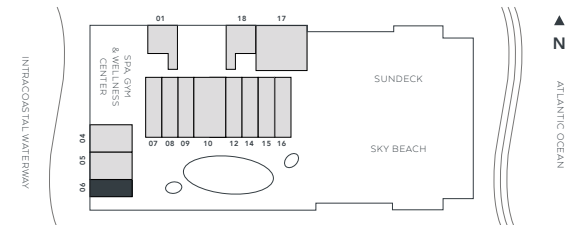
FORT LAUDERDALE BEACH



LEVEL 1



LEVEL 2



Floorplan U 1 Bed \ 1.5 Baths \ Floor 6

Two-story pool-level unit with wrap around terrace and balcony. Unit comes fully furnished and feature modern gourmet kitchen with premium high-gloss, and darkwood veneer cabinetry complimented by white quartz countertops.

Residence	1,037 sqft	96.34 M ²
Balcony	675 sqft	62.70 M ²
Total	1,712 sqft	159.04 M²

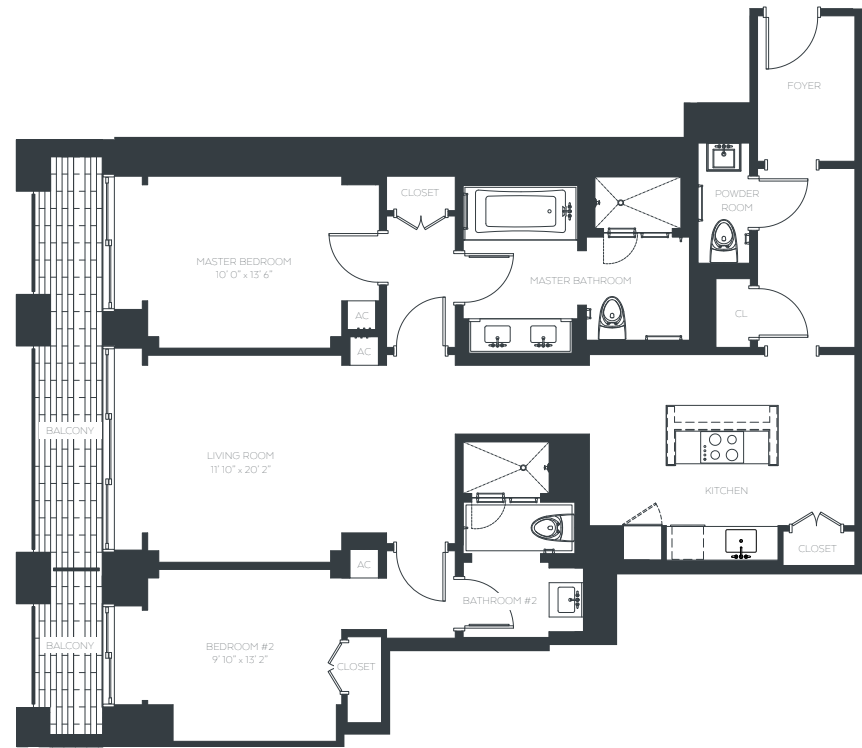
elliottfortlauderdale.com

Compass is a licensed real estate broker. Compass is licensed to do business in Florida as Compass Florida, LLC, as: Compass in California, Colorado, Connecticut, Florida, Georgia, Hawaii, Illinois, Maryland, Massachusetts, Minnesota, New Jersey, New York, North Carolina, Rhode Island, Texas, Virginia, and Washington; Compass RE in Delaware, Idaho, Pennsylvania and Tennessee; Compass Real Estate in Washington, DC, Maine, New Hampshire, Vermont, and Wyoming; Compass Realty Group in Missouri and Kansas; Launch Powered by Compass in Arizona; and Compass Carolinas, LLC in South Carolina. California License # 01991628, 1527235, 1527365, 1356742, 1443761, 1997075, 1935359, 1961027, 1842987, 1869607, 1866771, 1527205, 1079009, 1272467. No guarantee, warranty or representation of any kind is made regarding the completeness or accuracy of descriptions or measurements (including square footage measurements and property condition), such should be independently verified, and Compass expressly disclaims any liability in connection therewith. No financial or legal advice provided. Equal Housing Opportunity. © Compass 2025. 212-913-9058

COMPASS | Probst.

THE ELLIOTT

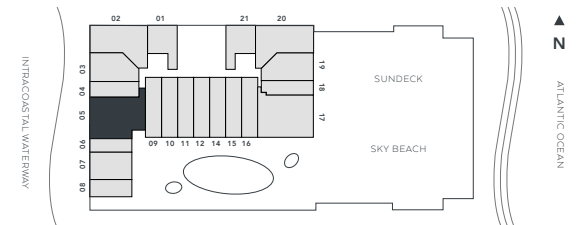
FORT LAUDERDALE BEACH



Floorplan V 2 Beds \ 2.5 Baths \ Floor 7

West facing with kitchen island and balcony. Unit comes fully furnished and feature modern gourmet kitchen with premium high-gloss, and darkwood veneer cabinetry complimented by white quartz countertops.

Residence	1,314 sqft	122.07 M ²
Balcony	329 sqft	30.56 M ²
Total	1,643 sqft	152.63 M²



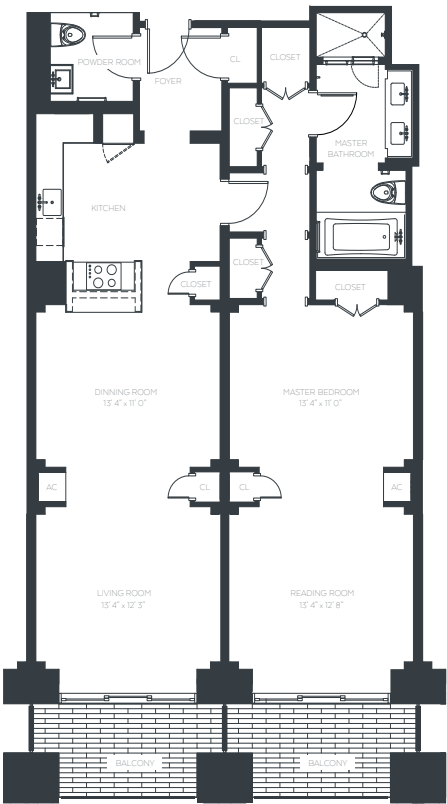
elliottfortlauderdale.com

Compass is a licensed real estate broker. Compass is licensed to do business in Florida as Compass Florida, LLC, as: Compass in California, Colorado, Connecticut, Florida, Georgia, Hawaii, Illinois, Maryland, Massachusetts, Minnesota, New Jersey, New York, North Carolina, Rhode Island, Texas, Virginia, and Washington; Compass RE in Delaware, Idaho, Pennsylvania and Tennessee; Compass Real Estate in Washington, DC, Maine, New Hampshire, Vermont, and Wyoming; Compass Realty Group in Missouri and Kansas; Launch Powered by Compass in Arizona; and Compass Carolinas, LLC in South Carolina. California License # 01991628, 1527235, 1527365, 1356742, 1443761, 1997075, 1935359, 1961027, 1842987, 1869607, 1866771, 1527205, 1079009, 1272467. No guarantee, warranty or representation of any kind is made regarding the completeness or accuracy of descriptions or measurements (including square footage measurements and property condition), such should be independently verified, and Compass expressly disclaims any liability in connection therewith. No financial or legal advice provided. Equal Housing Opportunity. © Compass 2025. 212-913-9058

COMPASS | Probst.

THE ELLIOTT

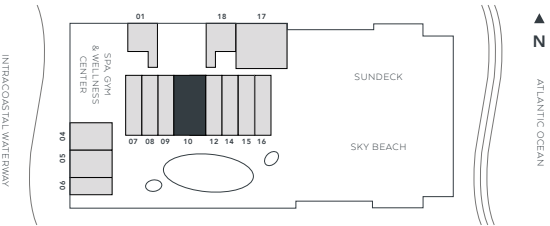
FORT LAUDERDALE BEACH



Floorplan X 1 Bed \ 1.5 Baths \ Floor 6

South facing pool view with balcony. Unit comes fully furnished and feature modern gourmet kitchen with premium high-gloss, and darkwood veneer cabinetry complimented by white quartz countertops.

Residence	1,296 sqft	120.40 M ²
Balcony	136 sqft	12.63 M ²
Total	1,432 sqft	133.03 M²



elliottfortlauderdale.com

Compass is a licensed real estate broker. Compass is licensed to do business in Florida as Compass Florida, LLC, as: Compass in California, Colorado, Connecticut, Florida, Georgia, Hawaii, Illinois, Maryland, Massachusetts, Minnesota, New Jersey, New York, North Carolina, Rhode Island, Texas, Virginia, and Washington; Compass RE in Delaware, Idaho, Pennsylvania and Tennessee; Compass Real Estate in Washington, DC, Maine, New Hampshire, Vermont, and Wyoming; Compass Realty Group in Missouri and Kansas; Launch Powered by Compass in Arizona; and Compass Carolinas, LLC in South Carolina. California License # 01991628, 1527235, 1527365, 1356742, 1443761, 1997075, 1935359, 1961027, 1842987, 1869607, 1866771, 1527205, 1079009, 1272467. No guarantee, warranty or representation of any kind is made regarding the completeness or accuracy of descriptions or measurements (including square footage measurements and property condition), such should be independently verified, and Compass expressly disclaims any liability in connection therewith. No financial or legal advice provided. Equal Housing Opportunity. © Compass 2025. 212-913-9058

COMPASS | Probst.

THE ELLIOTT

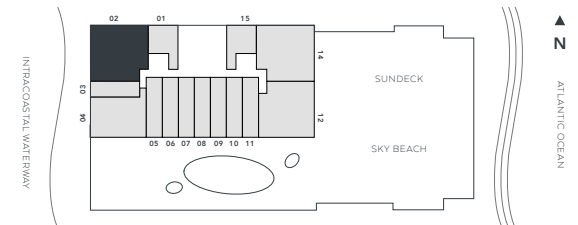
FORT LAUDERDALE BEACH



Floorplan Y 3 Beds \ 3.5 Baths \ Floor 19,22

Northwest corner unit with balcony and terrace areas. Unit comes fully furnished and feature modern gourmet kitchen with premium high-gloss, and darkwood veneer cabinetry complimented by white quartz countertops.

Residence	1,712 sqft	159.05 M ²
Balcony	383 sqft	35.58 M ²
Total	2,095 sqft	194.63 M²



elliottfortlauderdale.com

Compass is a licensed real estate broker. Compass is licensed to do business in Florida as Compass Florida, LLC, as: Compass in California, Colorado, Connecticut, Florida, Georgia, Hawaii, Illinois, Maryland, Massachusetts, Minnesota, New Jersey, New York, North Carolina, Rhode Island, Texas, Virginia, and Washington; Compass RE in Delaware, Idaho, Pennsylvania and Tennessee; Compass Real Estate in Washington, DC, Maine, New Hampshire, Vermont, and Wyoming; Compass Realty Group in Missouri and Kansas; Launch Powered by Compass in Arizona; and Compass Carolinas, LLC in South Carolina. California License # 01991628, 1527235, 1527365, 1356742, 1443761, 1997075, 1935359, 1961027, 1842987, 1869607, 1866771, 1527205, 1079009, 1272467. No guarantee, warranty or representation of any kind is made regarding the completeness or accuracy of descriptions or measurements (including square footage measurements and property condition), such should be independently verified, and Compass expressly disclaims any liability in connection therewith. No financial or legal advice provided. Equal Housing Opportunity. © Compass 2025. 212-913-9058

COMPASS | Probst.

THE ELLIOTT

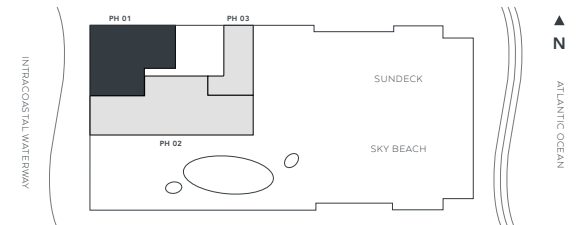
FORT LAUDERDALE BEACH



Floorplan PH1 3 Beds \ 3.5 Baths \ Floor 24

Northwest corner unit with expansive balcony and terrace areas. Unit comes fully furnished and feature modern gourmet kitchen with premium high-gloss, and darkwood veneer cabinetry complimented by white quartz countertops.

Residence	2,365 sqft	219.71 M ²
Balcony	1,136 sqft	105.53 M ²
Total	3,501 sqft	325.34 M²



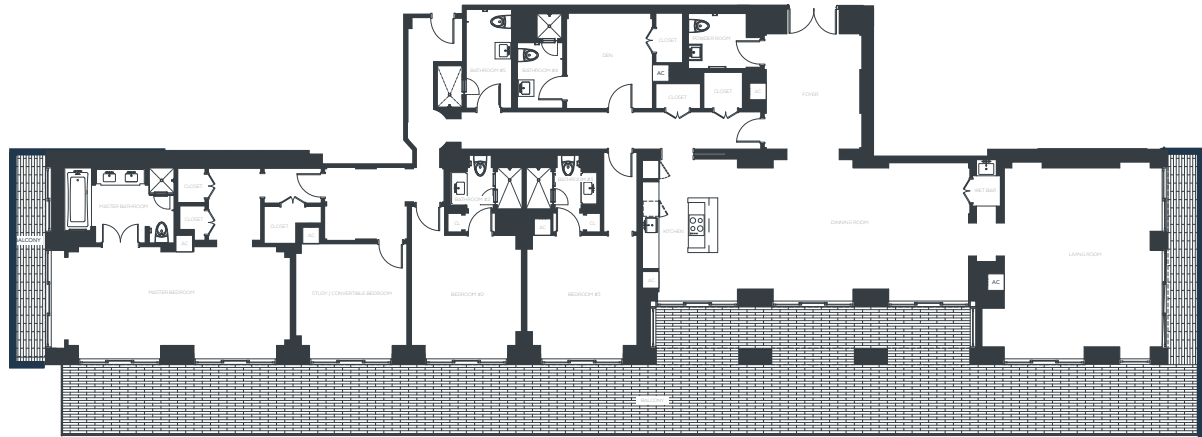
elliottfortlauderdale.com

Compass is a licensed real estate broker. Compass is licensed to do business in Florida as Compass Florida, LLC, as: Compass in California, Colorado, Connecticut, Florida, Georgia, Hawaii, Illinois, Maryland, Massachusetts, Minnesota, New Jersey, New York, North Carolina, Rhode Island, Texas, Virginia, and Washington; Compass RE in Delaware, Idaho, Pennsylvania and Tennessee; Compass Real Estate in Washington, DC, Maine, New Hampshire, Vermont, and Wyoming; Compass Realty Group in Missouri and Kansas; Launch Powered by Compass in Arizona; and Compass Carolinas, LLC in South Carolina. California License # 01991628, 1527235, 1527365, 1356742, 1443761, 1997075, 1935359, 1961027, 1842987, 1869607, 1866771, 1527205, 1079009, 1272467. No guarantee, warranty or representation of any kind is made regarding the completeness or accuracy of descriptions or measurements (including square footage measurements and property condition), such should be independently verified, and Compass expressly disclaims any liability in connection therewith. No financial or legal advice provided. Equal Housing Opportunity. © Compass 2025. 212-913-9058

COMPASS | Probst.

THE ELLIOTT

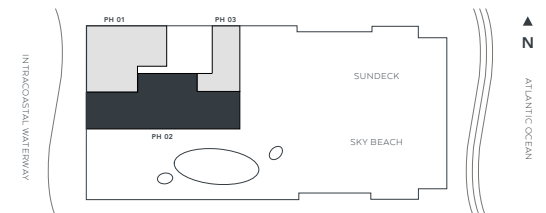
FORT LAUDERDALE BEACH



Floorplan PH2 4 Beds \ 5.5 Baths \ Floor 24

South facing unit with wrap around balcony, terrace areas and pool views. Unit comes fully furnished and feature modern gourmet kitchen with premium high-gloss, and darkwood veneer cabinetry complimented by white quartz countertops.

Residence	4,055 sqft	376.72 M ²
Balcony	1,649 sqft	153.19 M ²
Total	5,704 sqft	529.91 M²



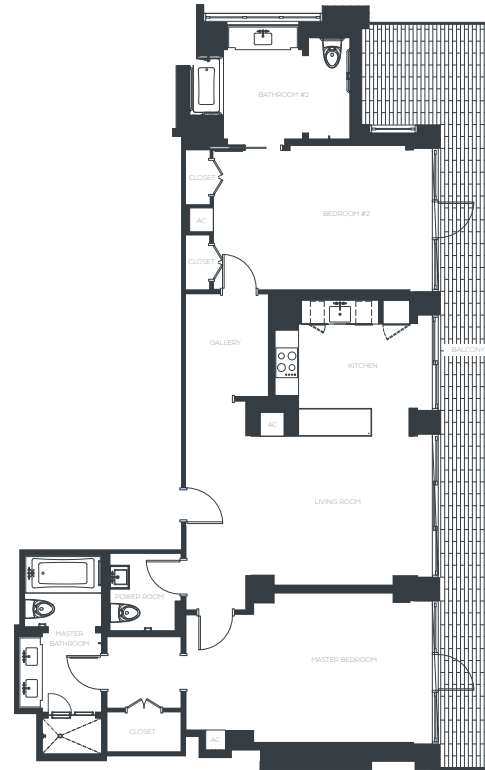
elliottfortlauderdale.com

Compass is a licensed real estate broker. Compass is licensed to do business in Florida as Compass Florida, LLC, as: Compass in California, Colorado, Connecticut, Florida, Georgia, Hawaii, Illinois, Maryland, Massachusetts, Minnesota, New Jersey, New York, North Carolina, Rhode Island, Texas, Virginia, and Washington; Compass RE in Delaware, Idaho, Pennsylvania and Tennessee; Compass Real Estate in Washington, DC, Maine, New Hampshire, Vermont, and Wyoming; Compass Realty Group in Missouri and Kansas; Launch Powered by Compass in Arizona; and Compass Carolinas, LLC in South Carolina. California License # 01991628, 1527235, 1527365, 1356742, 1443761, 1997075, 1935359, 1961027, 1842987, 1869607, 1866771, 1527205, 1079009, 1272467. No guarantee, warranty or representation of any kind is made regarding the completeness or accuracy of descriptions or measurements (including square footage measurements and property condition), such should be independently verified, and Compass expressly disclaims any liability in connection therewith. No financial or legal advice provided. Equal Housing Opportunity. © Compass 2025. 212-913-9058

COMPASS | Probst.

THE ELLIOTT

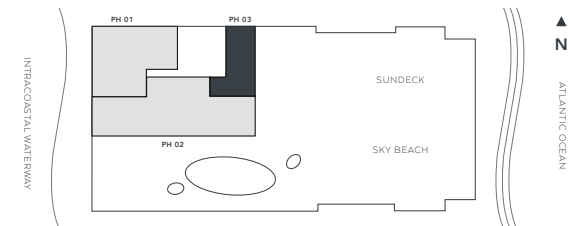
FORT LAUDERDALE BEACH



Floorplan PH3 2 Beds \ 2.5 Baths \ Floor 24

Northeast corner unit with expansive balcony area. Unit comes fully furnished and feature modern gourmet kitchen with premium high-gloss, and darkwood veneer cabinetry complimented by white quartz countertops.

Residence	1,525 sqft	141.67 M ²
Balcony	349 sqft	32.43 M ²
Total	1,874 sqft	174.10 M²



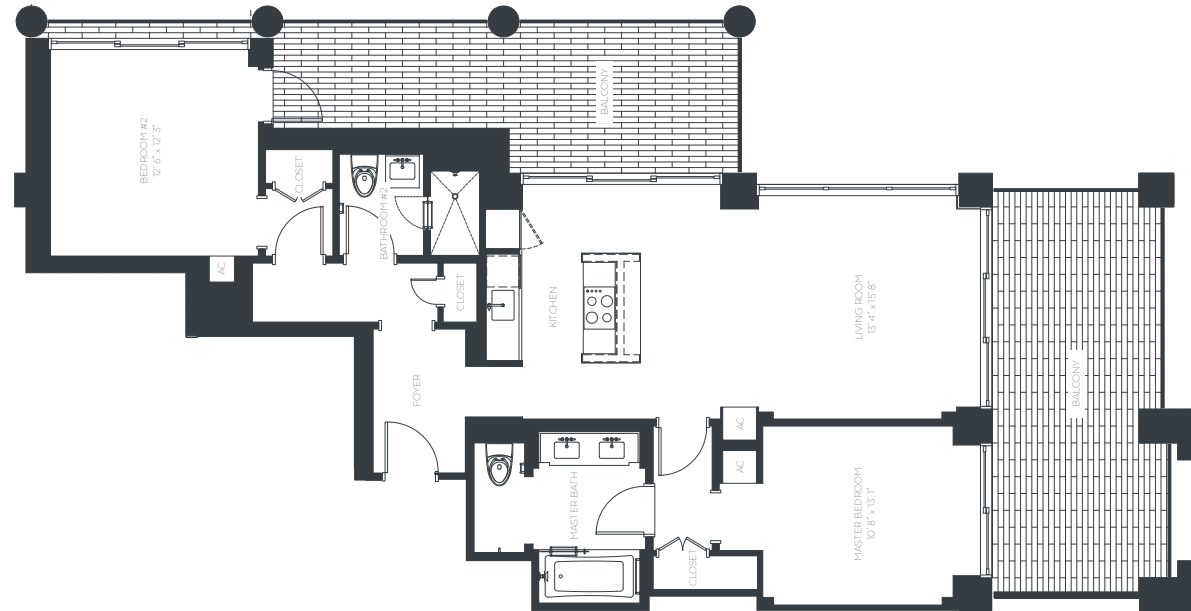
elliottfortlauderdale.com

Compass is a licensed real estate broker. Compass is licensed to do business in Florida as Compass Florida, LLC, as: Compass in California, Colorado, Connecticut, Florida, Georgia, Hawaii, Illinois, Maryland, Massachusetts, Minnesota, New Jersey, New York, North Carolina, Rhode Island, Texas, Virginia, and Washington; Compass RE in Delaware, Idaho, Pennsylvania and Tennessee; Compass Real Estate in Washington, DC, Maine, New Hampshire, Vermont, and Wyoming; Compass Realty Group in Missouri and Kansas; Launch Powered by Compass in Arizona; and Compass Carolinas, LLC in South Carolina. California License # 01991628, 1527235, 1527365, 1356742, 1443761, 1997075, 1935359, 1961027, 1842987, 1869607, 1866771, 1527205, 1079009, 1272467. No guarantee, warranty or representation of any kind is made regarding the completeness or accuracy of descriptions or measurements (including square footage measurements and property condition), such should be independently verified, and Compass expressly disclaims any liability in connection therewith. No financial or legal advice provided. Equal Housing Opportunity. © Compass 2025. 212-913-9058

COMPASS | Probst.

THE ELLIOTT

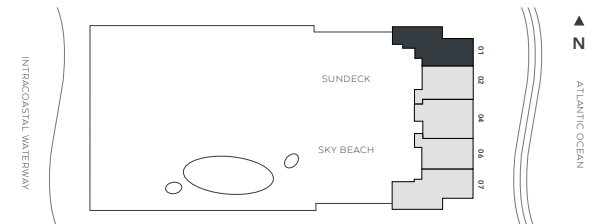
FORT LAUDERDALE BEACH



Floorplan G1 2 Beds \ 2 Baths \ Floors 2-5

Northeast corner unit with two balcony areas, kitchen island and soaking tub. Unit comes fully furnished and feature modern gourmet kitchen with premium high-gloss, and darkwood veneer cabinetry complimented by white quartz countertops.

	Floors 2-3	Floor 4	Floor 5	Floors 2-3	Floor 4	Floor 5
Residence	1,186 sqft	1,186 sqft	1,186 sqft	110.18 M ²	110.18 M ²	110.18 M ²
Balcony	442 sqft	451 sqft	404 sqft	41.06 M ²	41.89 M ²	37.53 M ²
Total	1,628 sqft	1,637 sqft	1,590 sqft	151.24 M²	152.07 M²	147.71 M²



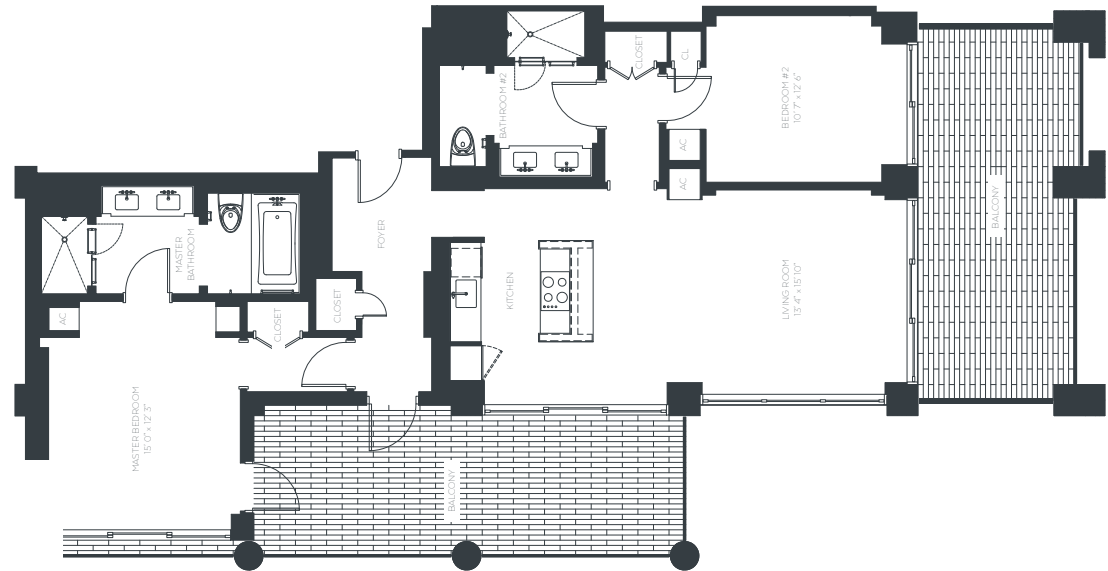
elliottfortlauderdale.com

Compass is a licensed real estate broker. Compass is licensed to do business in Florida as Compass Florida, LLC, as: Compass in California, Colorado, Connecticut, Florida, Georgia, Hawaii, Illinois, Maryland, Massachusetts, Minnesota, New Jersey, New York, North Carolina, Rhode Island, Texas, Virginia, and Washington; Compass RE in Delaware, Idaho, Pennsylvania and Tennessee; Compass Real Estate in Washington, DC, Maine, New Hampshire, Vermont, and Wyoming; Compass Realty Group in Missouri and Kansas; Launch Powered by Compass in Arizona; and Compass Carolinas, LLC in South Carolina. California License # 01991628, 1527235, 1527365, 1356742, 1443761, 1997075, 1935359, 1961027, 1842987, 1869607, 1866771, 1527205, 1079009, 1272467. No guarantee, warranty or representation of any kind is made regarding the completeness or accuracy of descriptions or measurements (including square footage measurements and property condition), such should be independently verified, and Compass expressly disclaims any liability in connection therewith. No financial or legal advice provided. Equal Housing Opportunity. © Compass 2025. 212-913-9058

COMPASS | Probst.

THE ELLIOTT

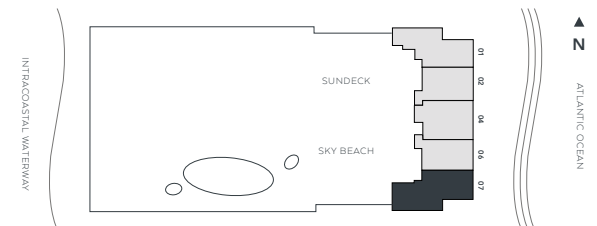
FORT LAUDERDALE BEACH



Floorplan G2 2 Beds \ 2 Baths \ Floor 2-5

Southeast corner unit with two balcony areas, kitchen island and soaking tub. Unit comes fully furnished and feature modern gourmet kitchen with premium high-gloss, and darkwood veneer cabinetry complimented by white quartz countertops.

	Floors 2-3	Floor 4	Floor 5	Floors 2-3	Floor 4	Floor 5
Residence	1,295 sqft	1,295 sqft	1,295 sqft	120.30 M ²	120.30 M ²	120.30 M ²
Balcony	487 sqft	406 sqft	359 sqft	45.24 M ²	37.71 M ²	33.35 M ²
Total	1,782 sqft	1,701 sqft	1,654 sqft	165.54 M²	158.01 M²	153.65 M²



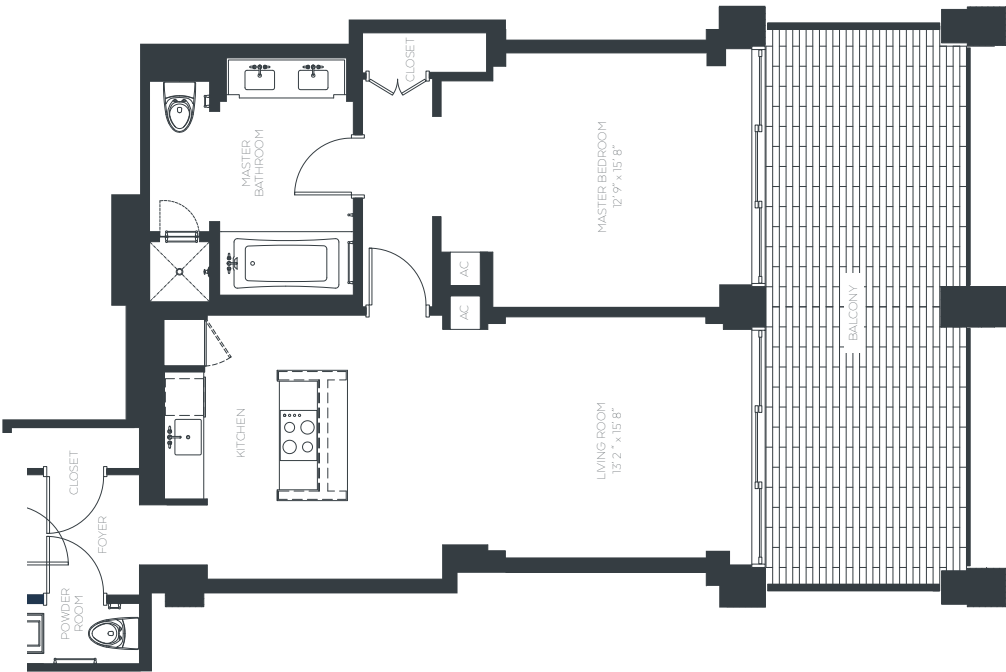
elliottfortlauderdale.com

Compass is a licensed real estate broker. Compass is licensed to do business in Florida as Compass Florida, LLC, as: Compass in California, Colorado, Connecticut, Florida, Georgia, Hawaii, Illinois, Maryland, Massachusetts, Minnesota, New Jersey, New York, North Carolina, Rhode Island, Texas, Virginia, and Washington; Compass RE in Delaware, Idaho, Pennsylvania and Tennessee; Compass Real Estate in Washington, DC, Maine, New Hampshire, Vermont, and Wyoming; Compass Realty Group in Missouri and Kansas; Launch Powered by Compass in Arizona; and Compass Carolinas, LLC in South Carolina. California License # 01991628, 1527235, 1527365, 1356742, 1443761, 1997075, 1935359, 1961027, 1842987, 1869607, 1866771, 1527205, 1079009, 1272467. No guarantee, warranty or representation of any kind is made regarding the completeness or accuracy of descriptions or measurements (including square footage measurements and property condition), such should be independently verified, and Compass expressly disclaims any liability in connection therewith. No financial or legal advice provided. Equal Housing Opportunity. © Compass 2025. 212-913-9058

COMPASS | Probst.

THE ELLIOTT

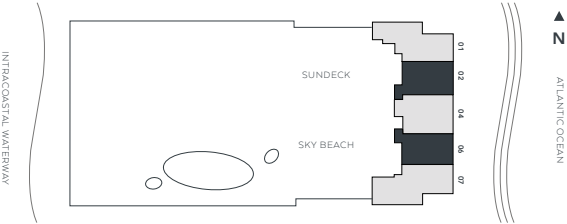
FORT LAUDERDALE BEACH



Floorplan H 1 Bed \ 1.5 Bath \ Floor 2-5

East facing units with kitchen island and balcony. Units are fully furnished and feature modern gourmet kitchen with premium high-gloss, and darkwood veneer cabinetry complimented by white quartz countertops.

Residence	944 sqft	87.70 M ²
Balcony	272 sqft	25.26 M ²
Total	1,216 sqft	112.96 M ²



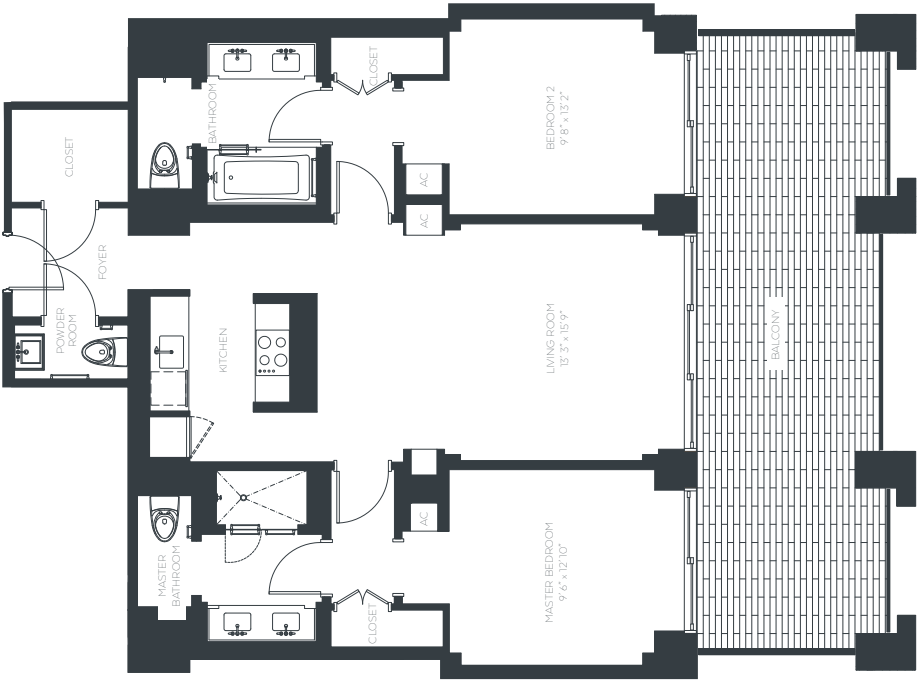
elliottfortlauderdale.com

Compass is a licensed real estate broker. Compass is licensed to do business in Florida as Compass Florida, LLC, as: Compass in California, Colorado, Connecticut, Florida, Georgia, Hawaii, Illinois, Maryland, Massachusetts, Minnesota, New Jersey, New York, North Carolina, Rhode Island, Texas, Virginia, and Washington; Compass RE in Delaware, Idaho, Pennsylvania and Tennessee; Compass Real Estate in Washington, DC, Maine, New Hampshire, Vermont, and Wyoming; Compass Realty Group in Missouri and Kansas; Launch Powered by Compass in Arizona; and Compass Carolinas, LLC in South Carolina. California License # 01991628, 1527235, 1527365, 1356742, 1443761, 1997075, 1935359, 1961027, 1842987, 1869607, 1866771, 1527205, 1079009, 1272467. No guarantee, warranty or representation of any kind is made regarding the completeness or accuracy of descriptions or measurements (including square footage measurements and property condition), such should be independently verified, and Compass expressly disclaims any liability in connection therewith. No financial or legal advice provided. Equal Housing Opportunity. © Compass 2025. 212-913-9058

COMPASS | Probst.

THE ELLIOTT

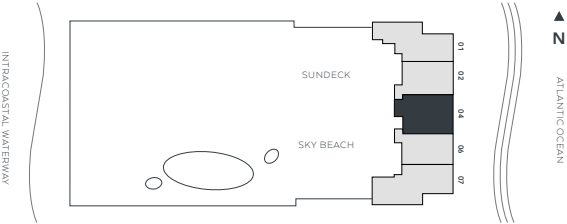
FORT LAUDERDALE BEACH



Floorplan K 2 Beds \ 2.5 Baths \ Floor 2-5

East facing unit with kitchen island and balcony. Unit comes fully furnished and feature modern gourmet kitchen with premium high-gloss, and darkwood veneer cabinetry complimented by white quartz countertops.

Residence	1,120 sqft	104.05 M ²
Balcony	336 sqft	31.21 M ²
Total	1,456 sqft	135.26 M ²



elliottfortlauderdale.com

Compass is a licensed real estate broker. Compass is licensed to do business in Florida as Compass Florida, LLC, as: Compass in California, Colorado, Connecticut, Florida, Georgia, Hawaii, Illinois, Maryland, Massachusetts, Minnesota, New Jersey, New York, North Carolina, Rhode Island, Texas, Virginia, and Washington; Compass RE in Delaware, Idaho, Pennsylvania and Tennessee; Compass Real Estate in Washington, DC, Maine, New Hampshire, Vermont, and Wyoming; Compass Realty Group in Missouri and Kansas; Launch Powered by Compass in Arizona; and Compass Carolinas, LLC in South Carolina. California License # 01991628, 1527235, 1527365, 1356742, 1443761, 1997075, 1935359, 1961027, 1842987, 1869607, 1866771, 1527205, 1079009, 1272467. No guarantee, warranty or representation of any kind is made regarding the completeness or accuracy of descriptions or measurements (including square footage measurements and property condition), such should be independently verified, and Compass expressly disclaims any liability in connection therewith. No financial or legal advice provided. Equal Housing Opportunity. © Compass 2025. 212-913-9058

COMPASS | Probst.